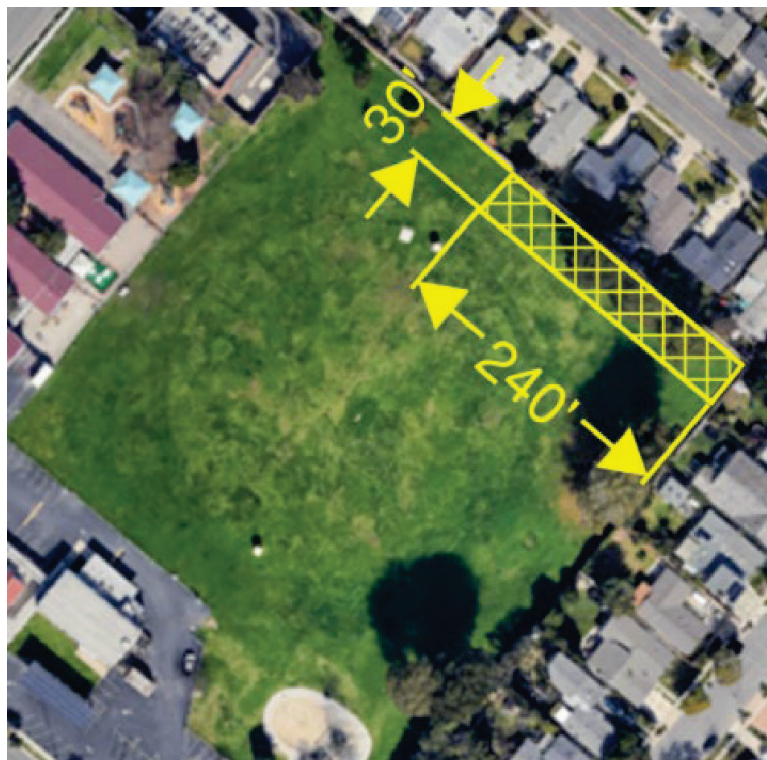


KARL KEMP RESERVOIR SITE AT LINDBERGH PARK

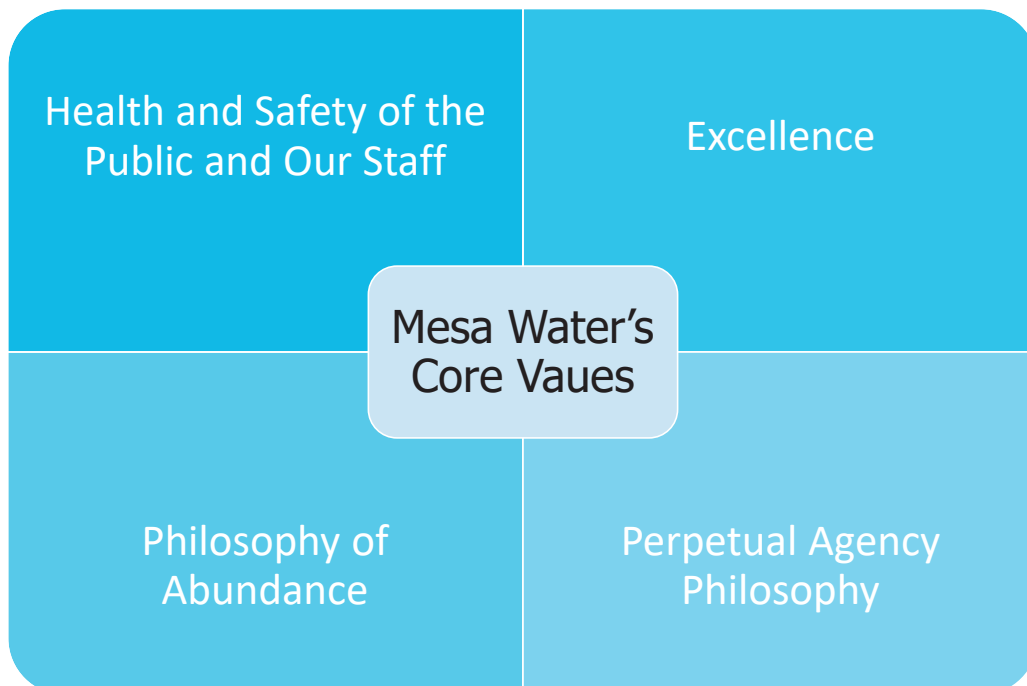
July 9, 2025

Proposed Project

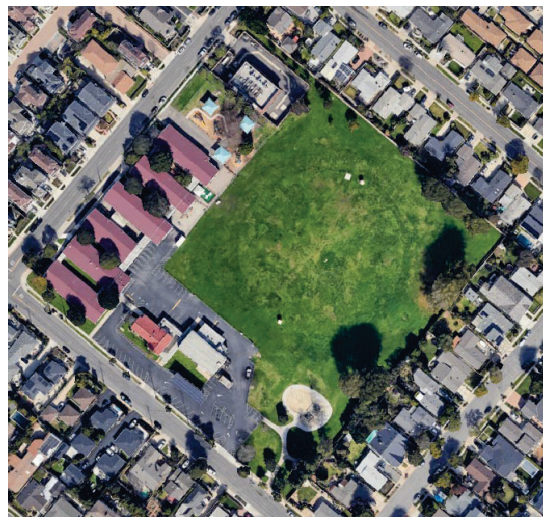


Mesa Water's Mission Statement

Mesa Water District, a local independent special district, manages its finances and water infrastructure, and advocates water policy, while reliably providing an abundance of clean, safe water to benefit the public's quality of life.



The Karl Kemp Reservoir is Critical Water Infrastructure



5 | July 9, 2025



Property Ownership and Agreements



6 | July 9, 2025



Supporting Dog Parks in the Right Location

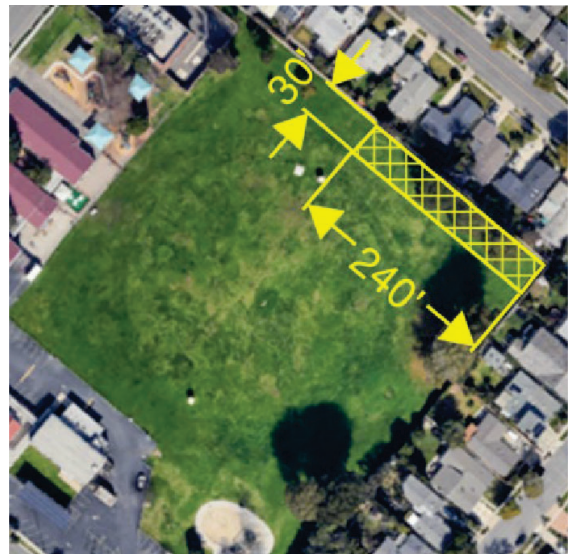
The Proponents of an off-leash dog park at Lindbergh Park state the following:

1. No increase in number of dogs visiting the park, therefore, potentially not increasing the impact to the Karl Kemp Reservoir.
2. There is a willingness to help fundraise or pay usage fees to help offset or completely cover expenses.
3. The site would be appreciated.



Potential Off-Leash Dog Park Risks

- Increased Time for Operation and Maintenance
- Dusty Conditions
- Vector Control
- Stormwater Runoff
- Regulatory Constraints
- Incident Response
- Neighbors



Brentwood Park



9 | July 9, 2025



Brentwood Park



10 | July 9, 2025



Potential Next Steps

- Maintain current use of the Karl Kemp Reservoir site as is, without pursuing an off-leash dog park.
- Table the discussion of an off-leash dog park until the Board of Directors Spring Board Workshop.
- Support the development of an off-leash dog park at the Karl Kemp Reservoir site that would be operated and maintained through the City of Costa Mesa's recreation easement.
- Direct staff to add the planning and construction of an off-leash dog park to a future fiscal year budget.
- Direct staff to begin development of plans for the construction of an off-leash dog park in Fiscal Year 2026.
- Support a proposal for an off-leash dog park located at Brentwood Park.

Recommendation

Maintain current use of the Karl Kemp Reservoir site as is, without pursuing an off-leash dog park.



QUESTIONS?