



Action Item 3

REGIONAL WATER ISSUES

October 29, 2024

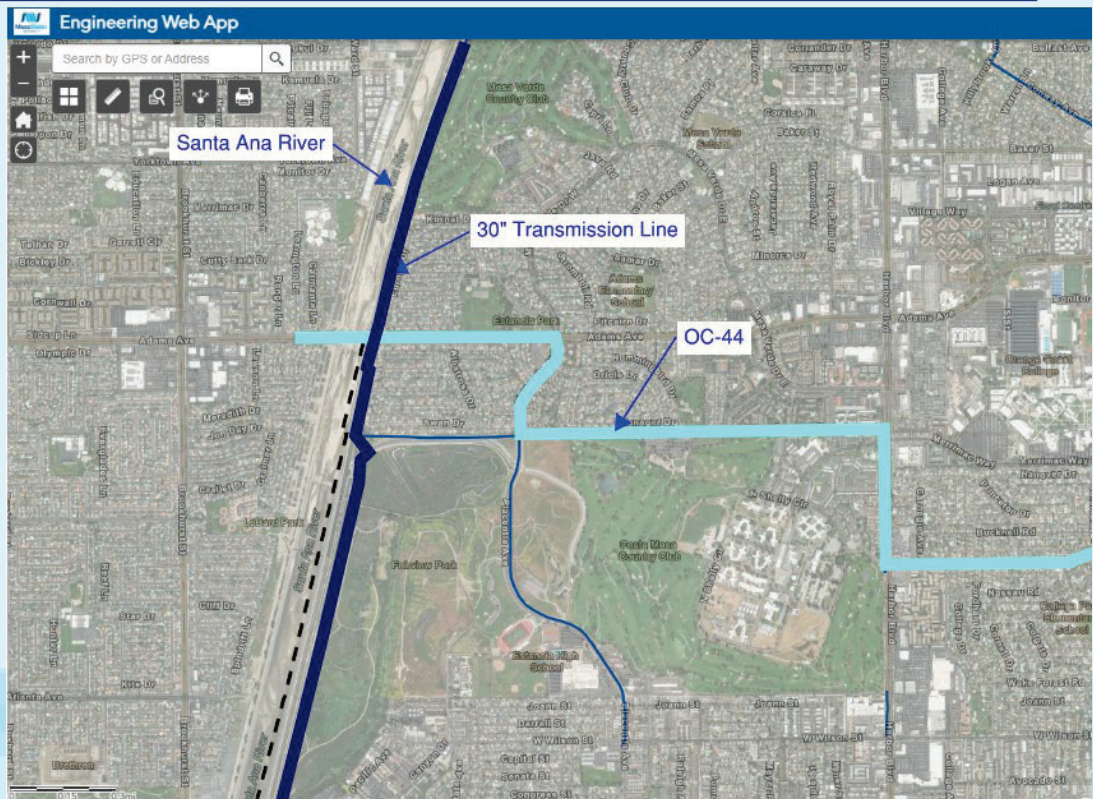


INTERAGENCY WATER TRANSFERS



Interagency Water Transfers

3 | October 29, 2024



What is the Need?

Item	Value
Average HB Demand	26,000 AF/yr
Average GW Production	20,000 AF/yr
85% BPP	22,000 AF/yr
Potential Need	2,000 AF/yr

4 | October 29, 2024

Potential Regulatory Issues



**State Water
Resources
Control Board**



5 | October 29, 2024



How much can Mesa Water Supply?

Item	Value
Average Mesa Water Demand	17,000 AF/yr
85% BPP	14,500 AF/yr
Reliable Clear Well Capacity	23,000 AF/yr
Potential Supply	8,500 AF/yr

6 | October 29, 2024



Potential Savings

Item	Cost
Volumetric Full-Service Treated Rate	\$1,256/AF
Cost of Groundwater	\$840/AF
Volumetric Savings	\$416/AF
Potential Volume Saved	2,000 AF/yr
Potential Savings	\$830,000/yr

Next Steps

1. Finalize Scope of Work – November 2024
2. RFP for Consultant – February 2025
3. Develop Feasibility Study – June 2025

QUESTIONS?

9 | October 29, 2024



NEW LOCAL WATER SUPPLY FEASIBILITY STUDY: “LOCAL SIP”



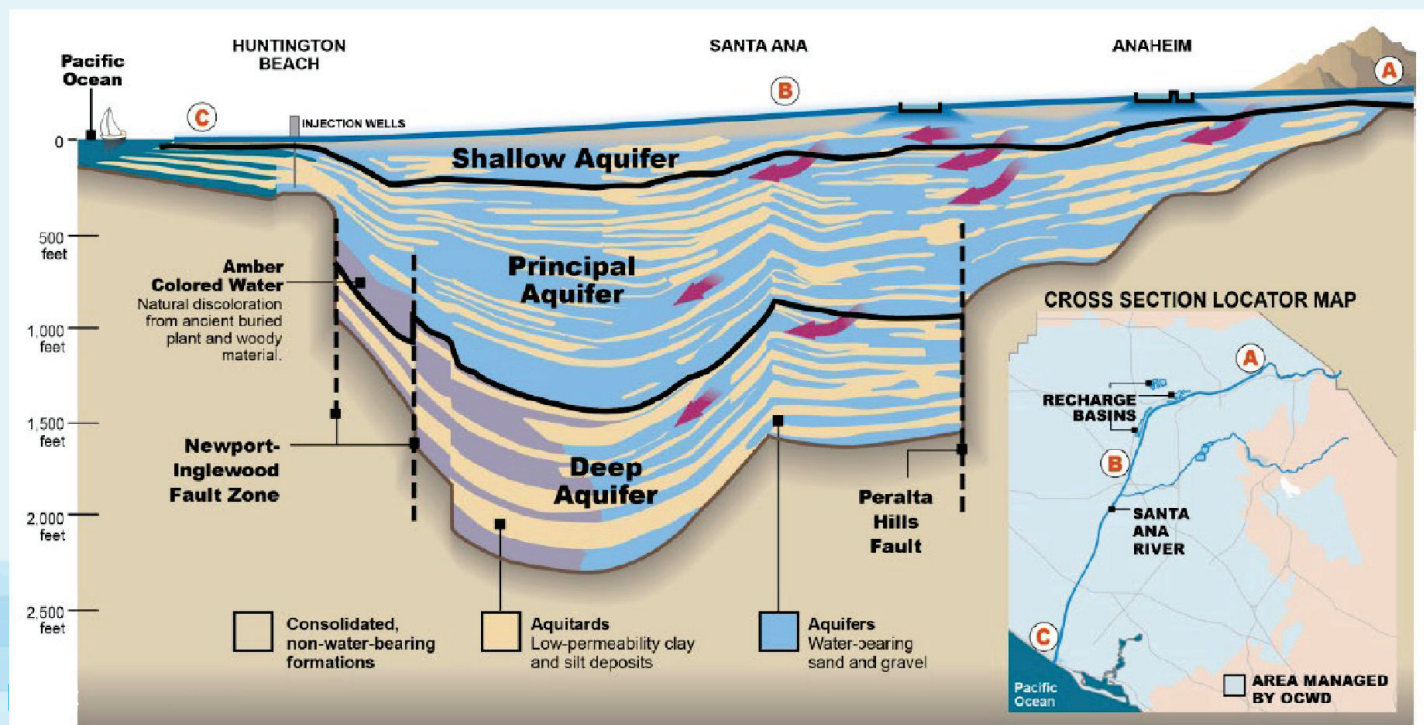
Potential Source Locations

- On the Mesa
- Newport Bay
- Ocean side of the Talbert Barrier

11 | October 29, 2024

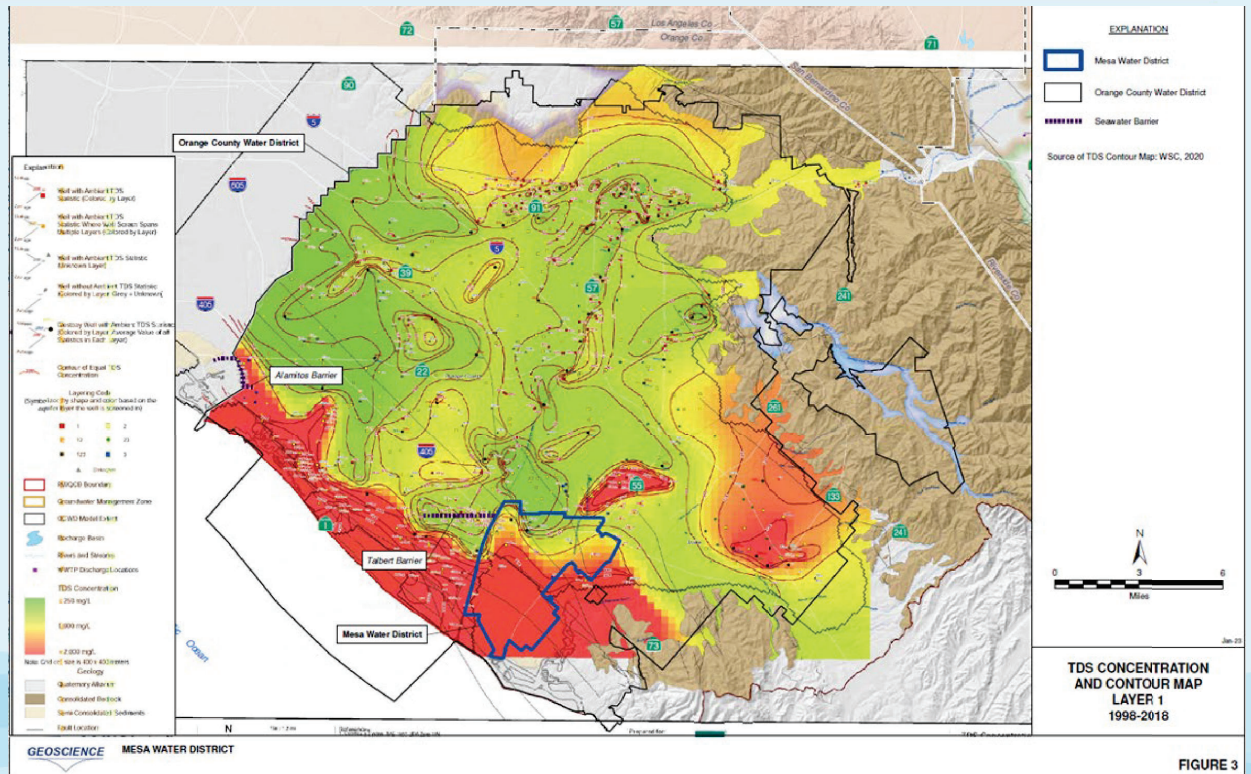


Santa Ana River Cross Section



Source: Basin 8-1 Alternative (OCWD, 2017)

TDS Contour Map - Layer 1



13

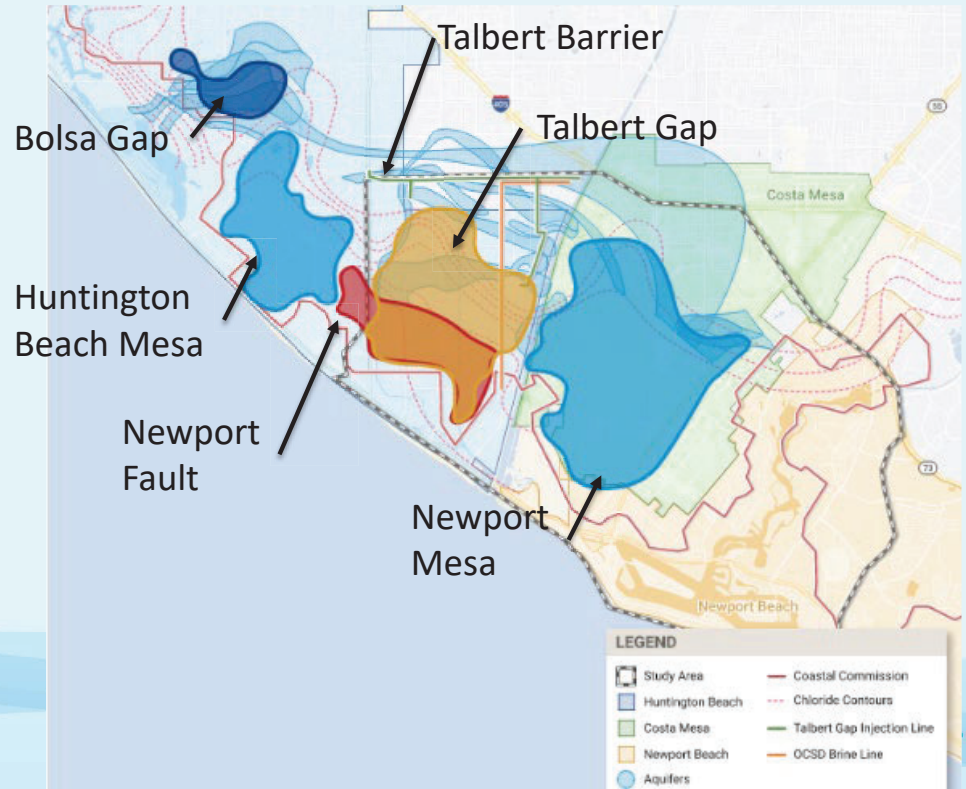
Grant Funding and Project Partners

- Participating Agencies



- U.S. Bureau of Reclamation (USBR) WaterSMART Grant

Project Update



15 | October 29, 2024

Project Update

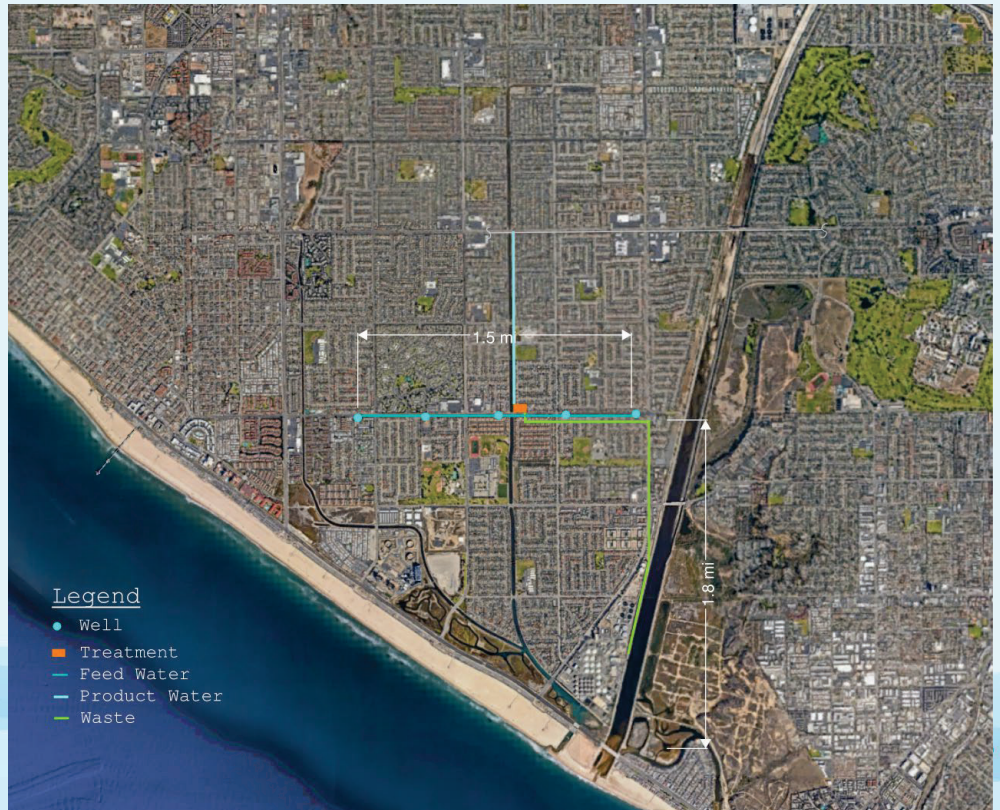
Area	Transmissive?	Source?	Impact to Talbert?	Chloride?	Good Location?	Model it?
Bolsa	Moderate	Poor	None	Low	No	No
Mesas	High	Fair	Moderate	Moderate	Maybe	Yes <input checked="" type="checkbox"/>
Talbert Gap (Inland)	High	Good	High	Moderate	No	No
Talbert Gap (Seaward)	High	Good	Moderate	High	Yes	Yes <input checked="" type="checkbox"/>
Newport Fault	Low	Poor	None	Very High	No	No

16 | October 29, 2024

5 mgd Facility

- Water Production Cost
 - \$2,000 - \$2,900/AF

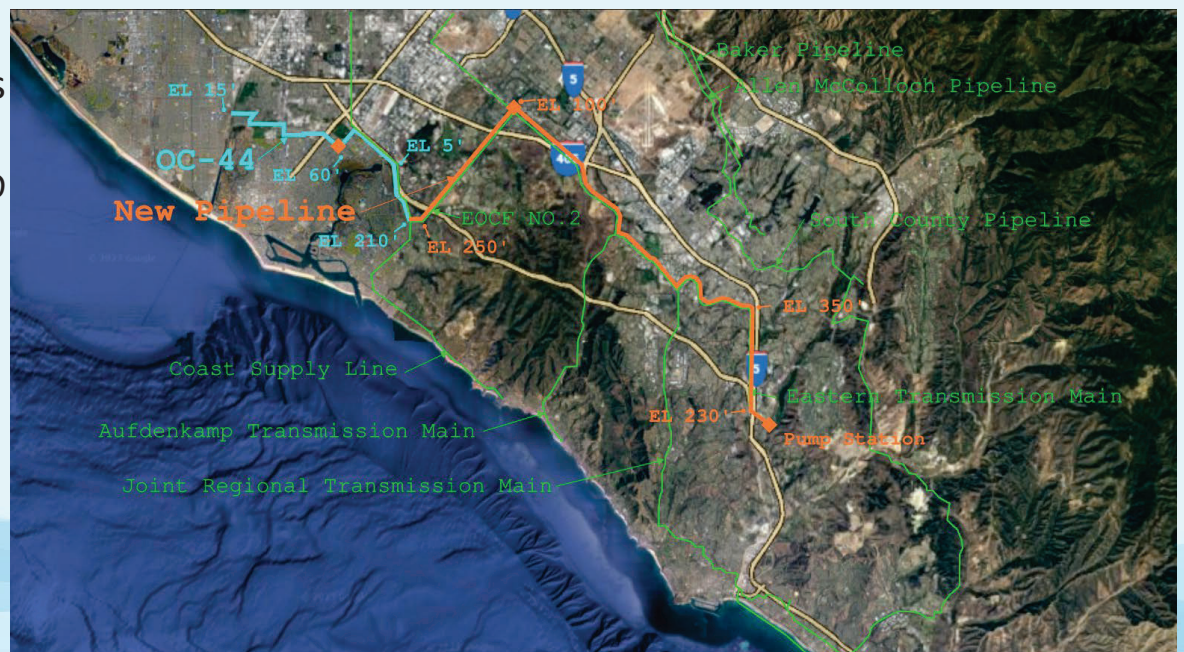
17 | October 29, 2024



Regional Pipeline

- 20.3 miles
- 3 Pump Stations
- Additional Cost
 - \$1,100/AF @ 5 mgd

18 | October 29, 2024



Regional Water Costs (Order of Magnitude)

Source of Water	Estimated Cost of Water (\$/AF)
Local SIP	\$2,000 - \$4,000
MWD Tier 1 (2024)	\$1,256
Doheny Ocean Desal	\$2,100 - \$3,000
OCWD South County Transfer	\$1,500 - \$2,000
Baker Water Treatment Plant	\$1,300 - \$1,500

Next Steps

1. Complete Feasibility Study
2. Order of Magnitude Cost Estimate
3. Investigate Replenishment Assessment
4. Investigate Exchanges
5. Future Funding
6. Environmental Documents

QUESTIONS?

21 | October 29, 2024

