



LOCAL WATER SUPPLY



January 25, 2023

AGENDA

1. Purpose
2. Legal
3. Engineering and Cost
4. Outreach
5. Messaging
6. Next Step

PURPOSE



LEGAL



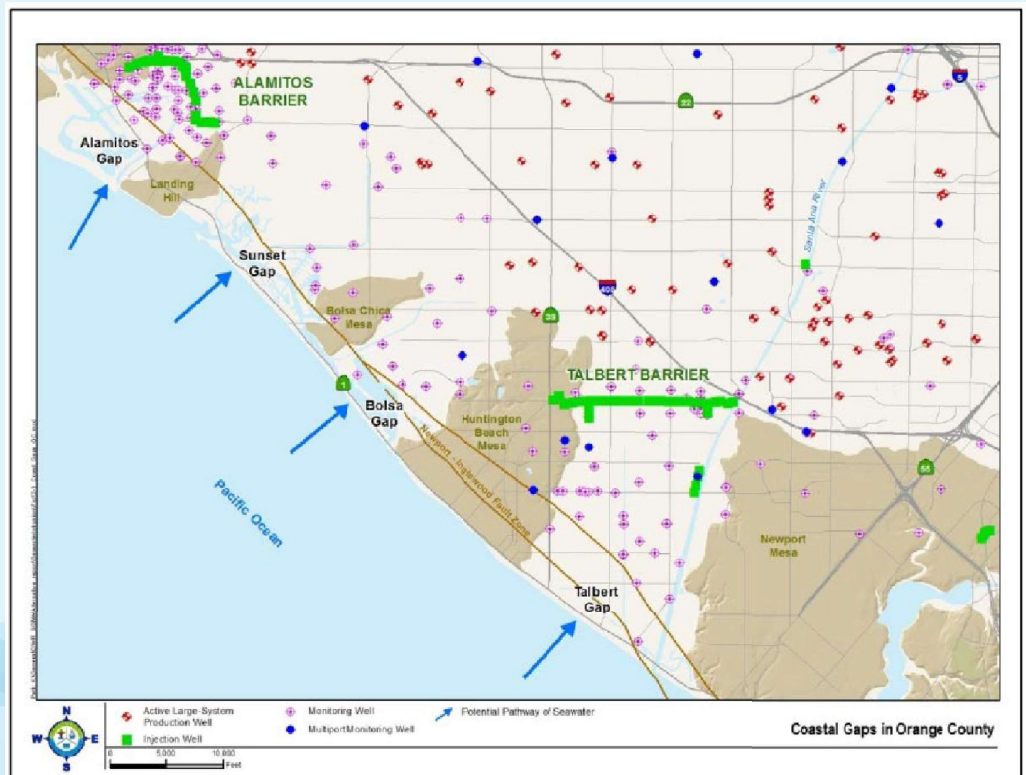
ENGINEERING AND COST



5 | January 25, 2023

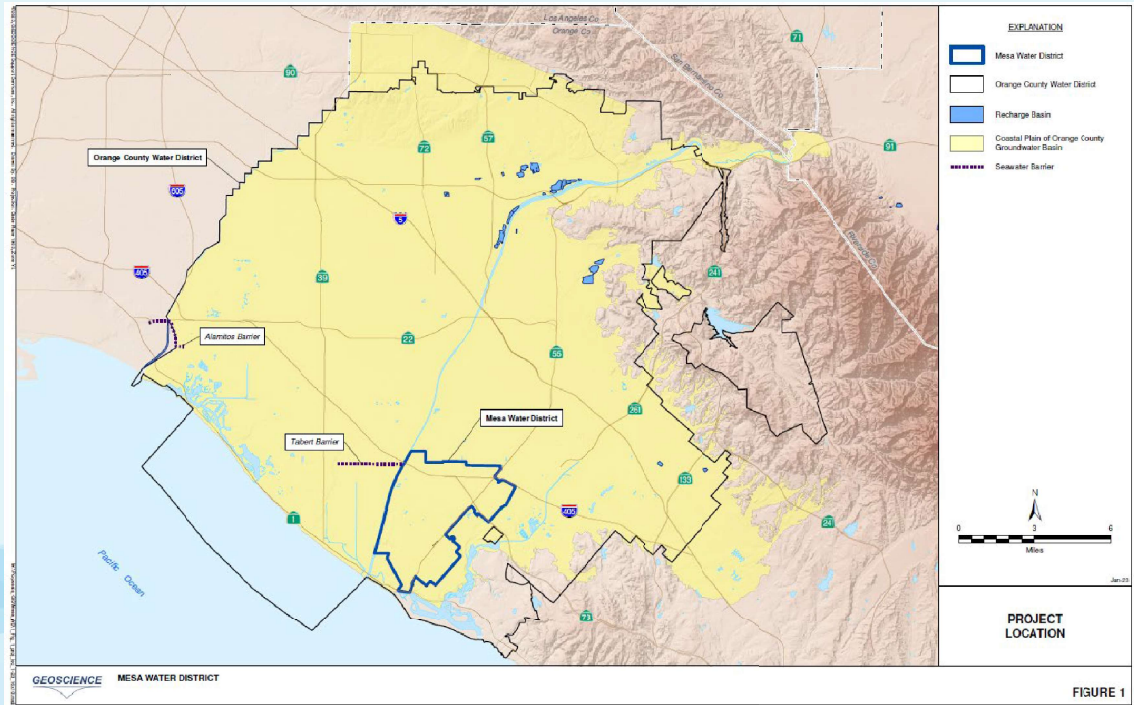
LOCAL GROUNDWATER SOUTH OF THE INJECTION BARRIER

- 5 – 8 mgd or 50 mgd desalination plant



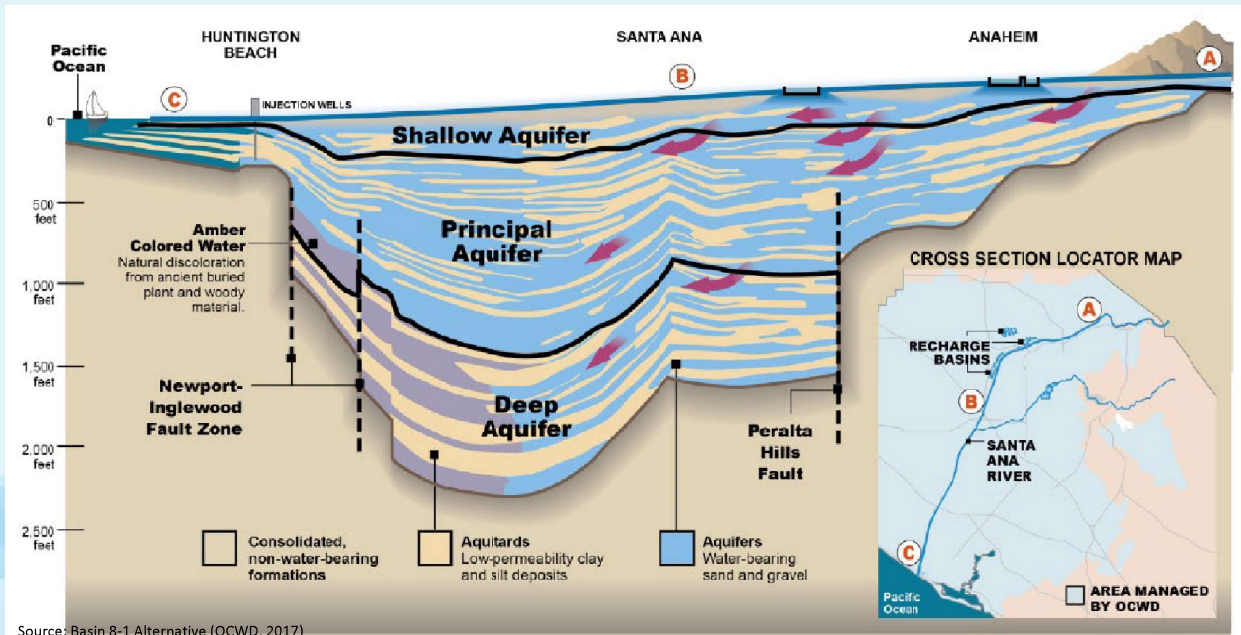
6 | January 25, 2023

MESA WATER DISTRICT AND BASIN BOUNDARY



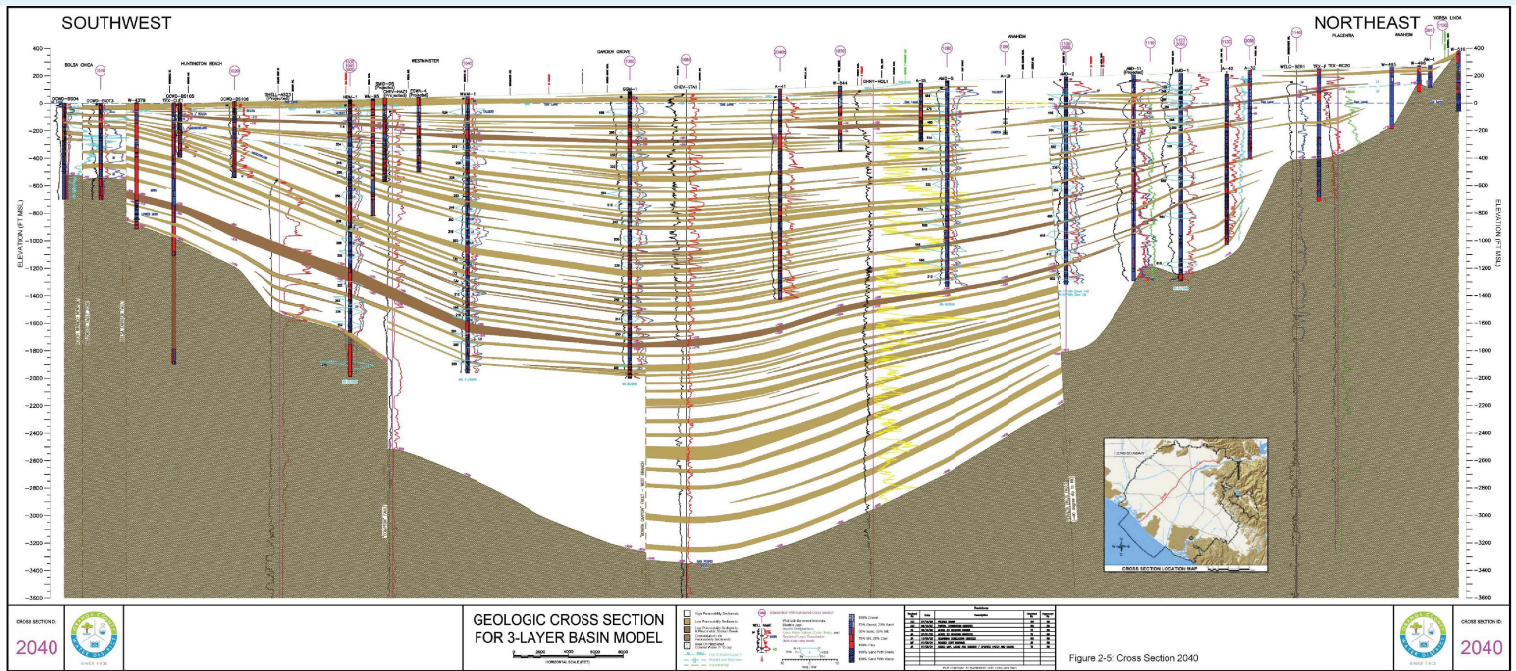
7 | January 25, 2023

SANTA ANA RIVER CROSS SECTION

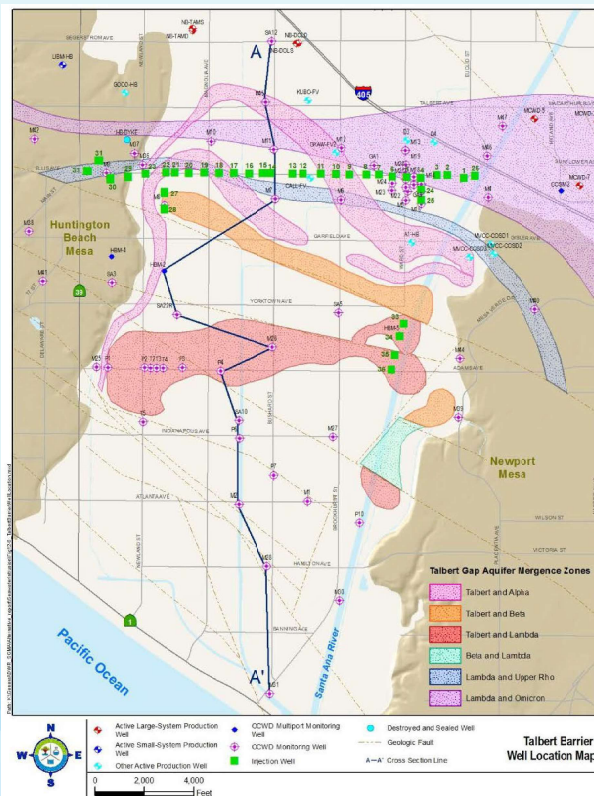


8 | January 25, 2023

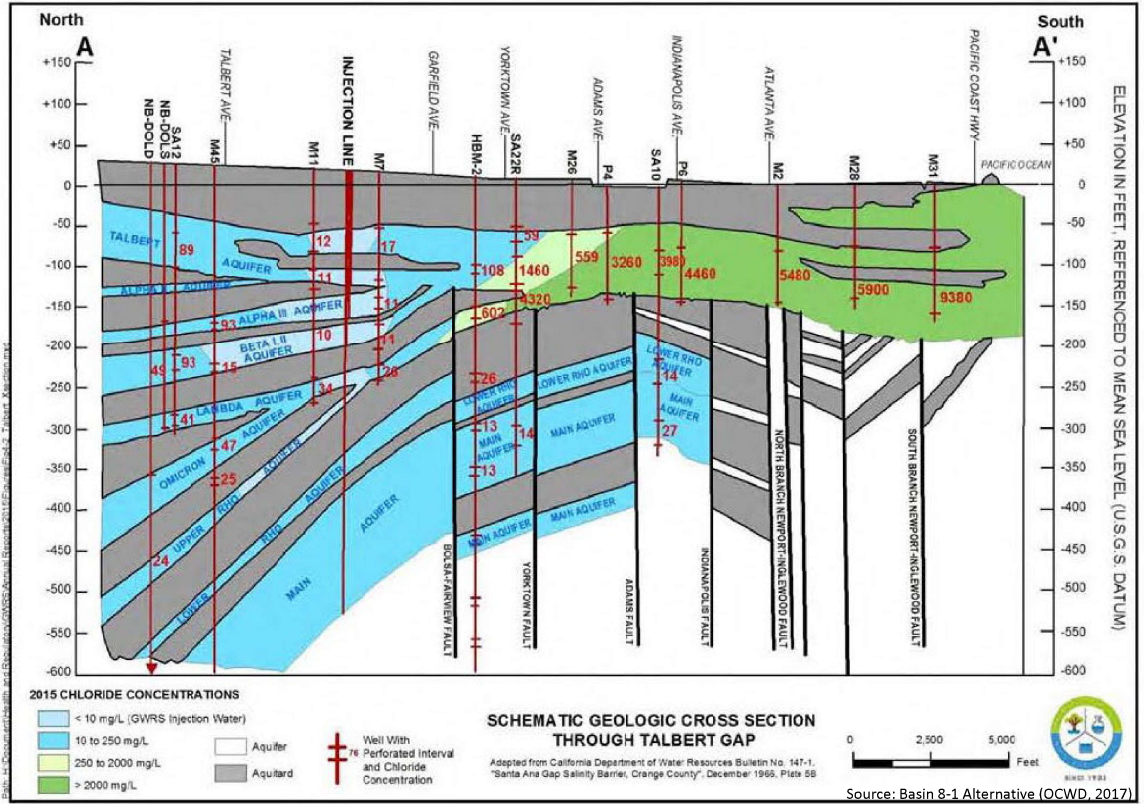
BASIN CROSS SECTION SW-NE



TALBERT GAP

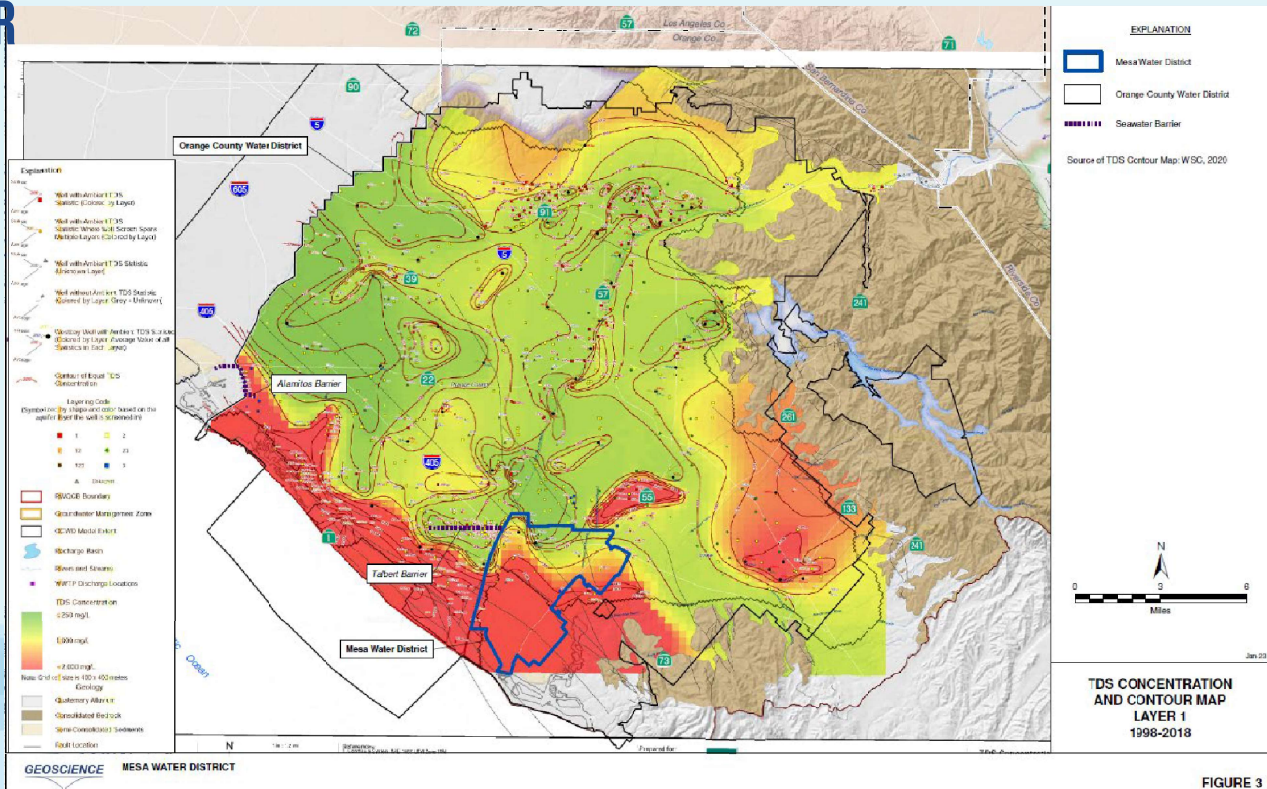


TALBERT GAP CROSS SECTION WITH TDS



11 | January 25, 2023

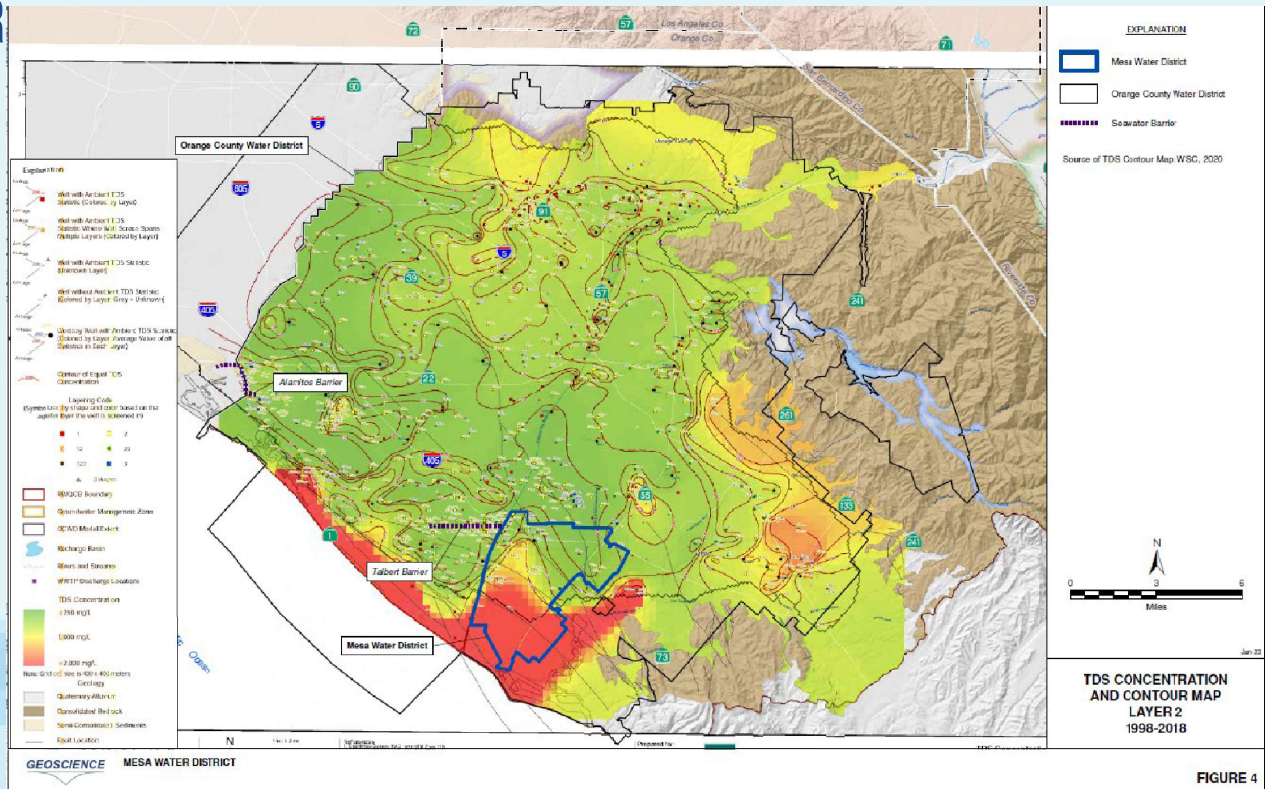
TDS CONTOUR MAP - LAYER 1



12 | January 25, 2023

FIGURE 3

TDS CONTOUR MAP - LAYER 2



13 | January 25, 2023

POTENTIAL SOURCES FOR FEED WATER

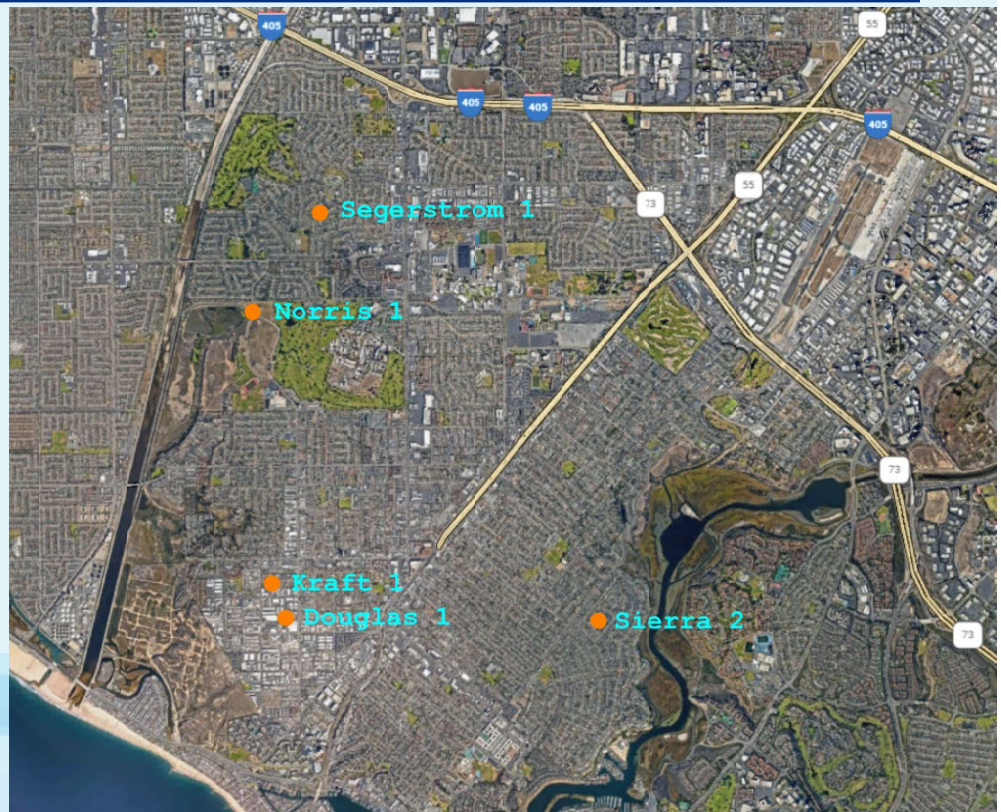
- On the Mesa
- Newport Bay
- Ocean side of the Talbert Barrier

14 | January 25, 2023

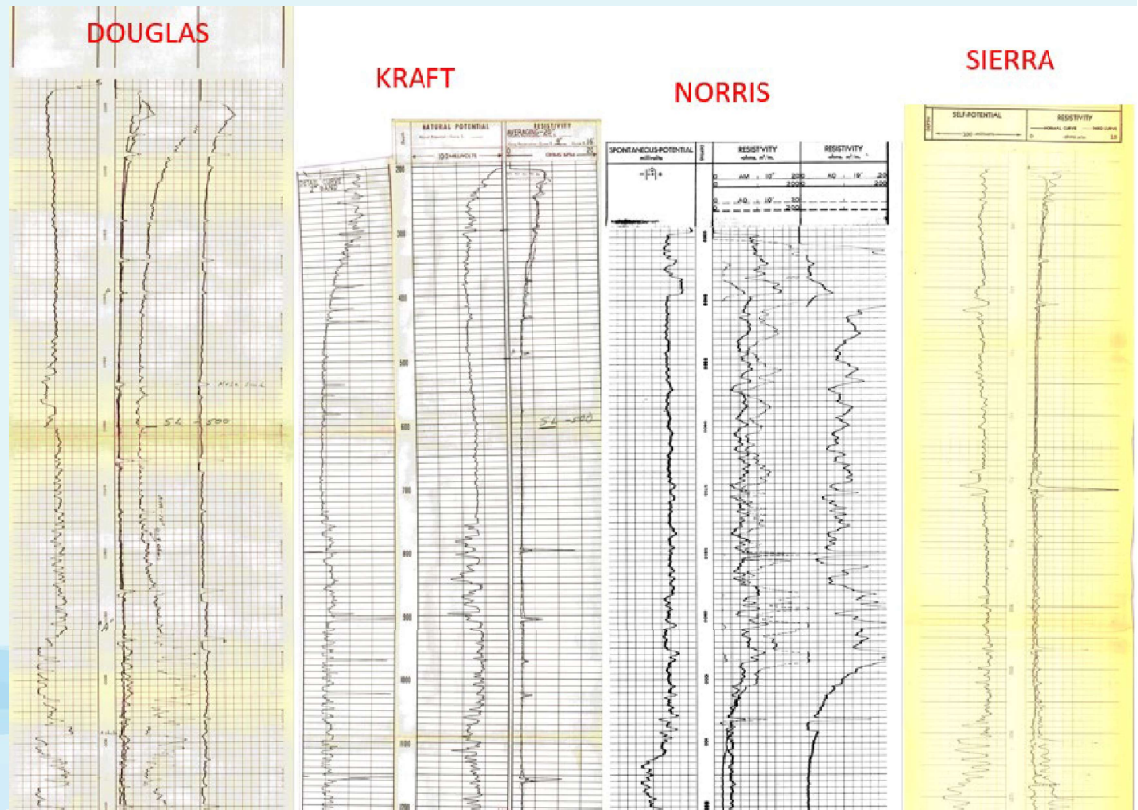
WELLS ON THE MESA

- No large municipal wells
- Wildcat and old oil production Wells
- Geophysical logs of oil boreholes show very low resistivity above 1,000 ft – likely very low water production.

OIL WELLS ON THE MESA

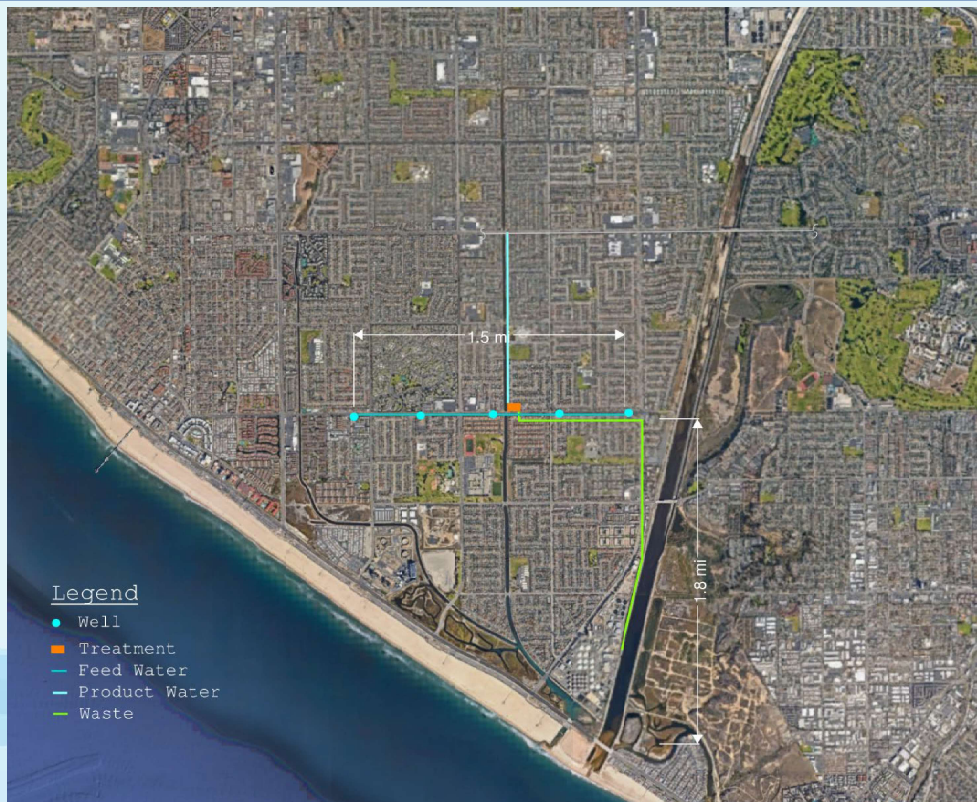


OIL WELLS ON THE MESA



5 MGD FACILITY

- Water Production Cost
 - \$2,000/AF



50 MGD FACILITY

- Water Production Cost
 - \$1,800/AF



GRANT FUNDING OPPORTUNITY



— BUREAU OF —
RECLAMATION

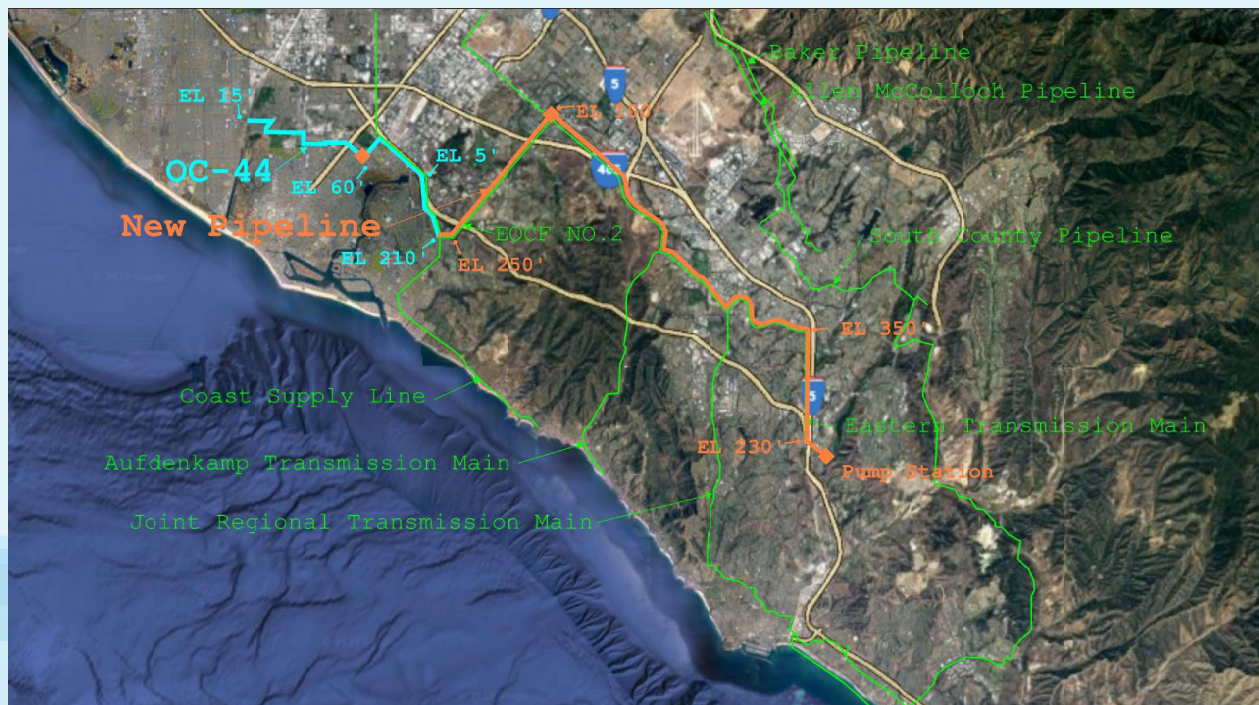
Notice of Funding Opportunity No. R23AS00076

**WaterSMART: Water Recycling and
Desalination Planning**



REGIONAL PIPELINE

- 20.3 miles
- 3 Pump Stations
- Additional Cost
 - \$1,100/AF @ 5 mgd



21 | January 25, 2023



OUTREACH



22 | January 25, 2023

MESSAGING



NEXT STEPS



Questions?

