

# The County of Orange Report

Prepared for the Mesa Water District

February 17, 2022  
by Lewis Consulting Group



## February Meeting

The February 9<sup>th</sup> meeting of OCLAFCO featured a relatively short agenda with mostly informational items.

The meeting kicked off with the announcement that Supervisor Andrew Do is replacing Supervisor Katrina Foley as the County LAFCO alternate. This takes on added significance because Supervisor Bartlett's membership will be coming to an end as she leaves the Board of Supervisors later this year.

Under public comments, two concerned residents of Three Arch Bay aired their concerns. They expressed concerns over the district's "lack of transparency" and expansion of responsibility beyond their charter. Three Arch Bay will be participating in a MSR review later this year.

There was a presentation on LAFCO strategies objectives including Public Engagement, South Orange County governance and a review of MSR procedures by other LAFCOs.

Perhaps the most interesting item was the announcement of a new website feature where a detailed description of each of Orange County's cities and special districts will be on display.

## A Last Look Back at California's Redistricting

The PPIC relying on additional analysis by Plan Score, a non-partisan website, has analyzed the new Congressional, State Senate and Assembly districts in California and has noted there are now a significant increase in Latino districts; a diminished number of competitive races in California and an increased advantage for democrats in the state. PPIC projects that under the new lines, Democrats will be favored to win 62 of 80 State Assembly seats, 31 of 40 State Senate districts and 41 of 52 Congressional districts.

## **Key Elections Loom Large in Orange County**

With the June 7<sup>th</sup> California election edging closer and closer, of the many interesting elections taking place, three in particular stand out. **First** is the countywide election for District Attorney. Incumbent Todd Spitzer is being challenged by former Special Assistant U.S. Attorney Pete Hardin. This race will be a “clash of ideologies”, testing whether or not Orange Countians desire a more “progressive” county prosecutors office. One factor to keep an eye on will be billionaire George Soros’ financial commitment on behalf of Hardin.

The **second** race of interest is the contest for Orange County’s new “Fabulous Fifth” Supervisor District, pitting incumbent Katrina Foley against a Republican challenger - most likely former Supervisor Pat Bates. The outcome of this election will undoubtedly determine whether next year’s Board will have a Democrat or Republican majority.

**Finally** the battle for the 47<sup>th</sup> Congressional District will probably not determine partisan control of the U.S. House, but it will feature a nationally watched contest between two political powerhouses - incumbent Katie Porter and Republican challenger Scott Baugh. This race will be the focus of both parties and will be one of the most expensive races in the nation.

## **PPIC California Survey**

The Public Policy Institute of California (PPIC) has released the results of their most recent survey “Californians and Their Government”. The survey was conducted January 16-25, 2022 questioning 1,640 California adults of which 1,048 were likely voters. The survey has a margin of error of +/- 3.5% with a 95% confidence level.

The following are some of the more interesting questions from the survey.

Which one issue facing California today do you think is the most important for the governor and state legislature to work on in 2022?

- 19% COVID-19, coronavirus, mandates
- 13% homelessness
- 12% jobs, economy, inflation
- 7% crime, gangs, drugs
- 7% housing costs, availability
- 5% education, schools, teachers
- 5% state budget, deficit, state spending
- 4% immigration, illegal immigration
- 3% environment, pollution, global warming
- 3% health care, health insurance
- 2% gasoline prices, oil prices
- 2% government in general, problems with elected officials, political parties
- 2% government regulations
- 2% infrastructure
- 2% water, water availability, drought
- 7% other
- 5% don’t know

Overall, do you approve or disapprove of the way that Gavin Newsom is handling his job as governor of California?

- 56% approve
- 34% disapprove
- 10% don't know

Would you say that California is in an economic recession, or not?

- 23% yes, serious recession
- 20% yes, moderate recession
- 8% yes, mild recession
- 2% yes, don't know (volunteered)
- 40% no, not in an economic recession
- 7% don't know

Have recent price increases caused any financial hardship for you or your household?

- 20% severe hardship
- 41% moderate hardship
- 38% no hardship

How much of a problem are violence and street crime in your local community today—a big problem, somewhat of a problem, or not much of a problem?

- 34% big problem
- 31% somewhat of a problem
- 35% not much of a problem
- 1% don't know

Do you think the police in your local community treat all racial and ethnic groups fairly almost always, most of the time, only some of the time, or almost never?

- 28% almost always
- 28% most of the time
- 21% only some of the time
- 11% almost never
- 2% always (volunteered)
- 1% never (volunteered)
- 10% don't know

Overall, do you approve or disapprove of the way that Joe Biden is handling his job as president of the United States?

- 53% approve
- 43% disapprove
- 3% don't know

Do you think things in the United States are generally going in the right direction or the wrong direction?

- 38% right direction
- 56% wrong direction
- 6% don't know

Which comes closer to your view about where the US stands in the coronavirus outbreak: the worst is behind us OR the worst is yet to come?

- 67% the worst is behind us
- 26% the worst is yet to come
- 8% don't know

Do you think of yourself as closer to the Republican Party or Democratic Party?

- 22% Republican Party
- 44% Democratic Party
- 27% neither (volunteered)
- 7% don't know

## California's Latest Poll Gives Democrats Bad News

A new poll released February 15, 2022 by the University of California Institute of Governmental Studies has shocking news for California Democratic leaders. In the course of one month, since the release of the PPIC survey (above), Democrat incumbents have seen plummeting poll numbers. The survey of 8,937 registered California voters was conducted February 3<sup>rd</sup> - 10<sup>th</sup> and has a margin of error of +/- 2%.

	JANUARY 2022 PPIC POLL		FEBRUARY 2022 BERKELEY IGS POLL	
	APPROVE	DISAPPROVE	APPROVE	DISAPPROVE
<b>PRESIDENT BIDEN</b>	<b>53%</b>	<b>43%</b>	<b>47%</b>	<b>48%</b>
<b>GOVERNOR NEWSOM</b>	<b>56%</b>	<b>34%</b>	<b>48%</b>	<b>47%</b>
<b>SENATOR FEINSTEIN</b>	---	---	<b>30%</b>	<b>49%</b>
<b>VICE PRESIDENT HARRIS</b>	---	---	<b>38%</b>	<b>46%</b>

## Orange County COVID-19 Update

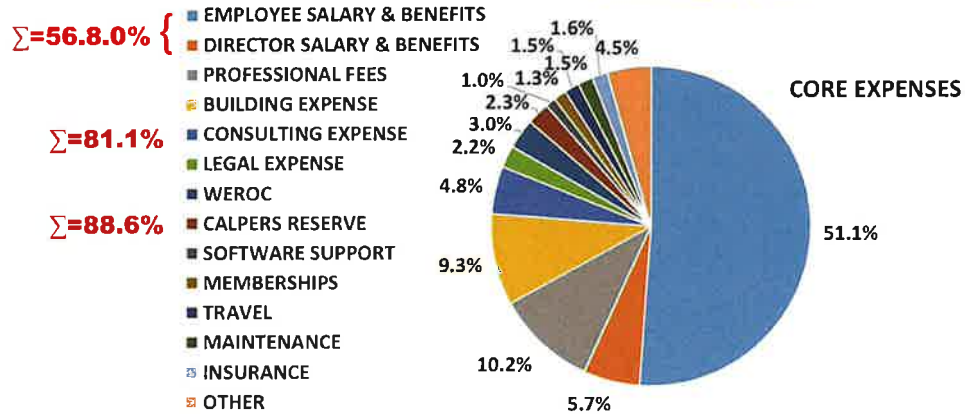
Thankfully the Omicron variant is on the downhill slide. We did have a spike in infections, hospitalizations and deaths, but nothing in comparison to the Delta variant.

ORANGE COUNTY COVID-19 STATS	2/17/2022	01/20/2022
CUMULATIVE CASES TO DATE	534,608	466,107
CUMULATIVE DEATHS TO DATE	6,419	5,946
DEATHS REPORTED TODAY	24	5
CUMULATIVE TESTS TO DATE	7,733,367	6,903,923
TESTS REPORTED THIS WEEK	134,795	251,069
CASES CURRENTLY HOSPITALIZED	399 *	1,183 *
CASES CURRENTLY IN ICU	76	199
CUMULATIVE RECOVERED TO DATE	494,829 *	323,606 *

\* = INCLUDES **ICU** CASES

# MWDOC Core Expenses

## FYE'23 Core Expense by Line Item



# Metropolitan Looking Ahead

## MET Key Budget Assumptions



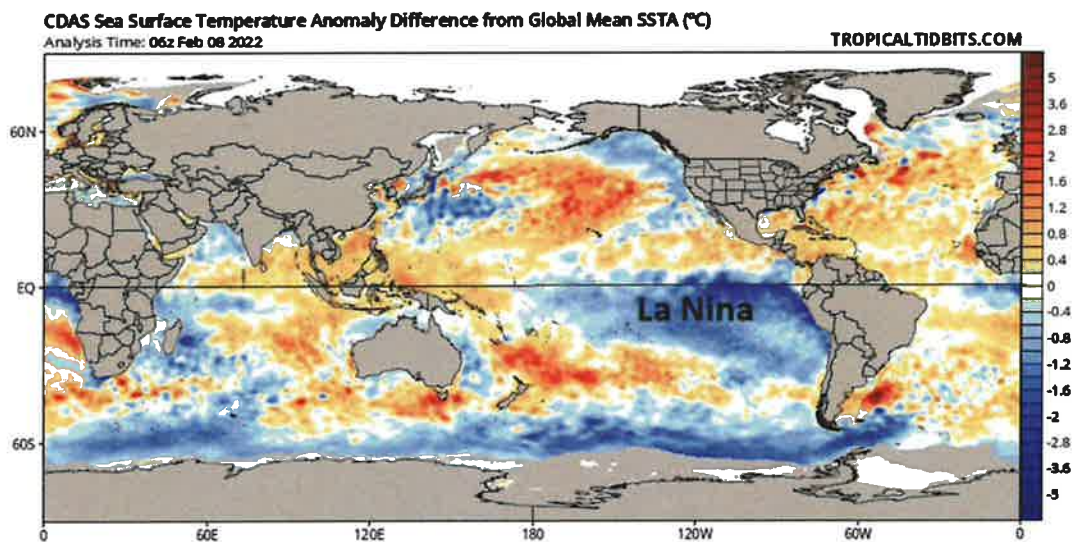
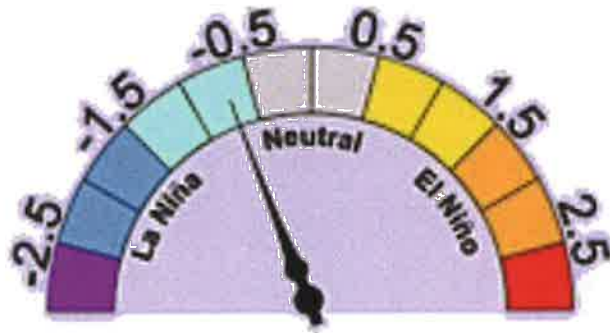
Fiscal Year Ending	Approved	Proposed	
	2022	2023	2024
Overall increase January	4.0%	8.0%	3.0%
Total Water Transactions*	1.6 MAF	1.59 MAF	1.54 MAF
State Water Project Allocation	50%	25%/40%	40%/50%
Colorado River Aqueduct Diversions	0.733 MAF	1.007 MAF	0.923 MAF
Capital Investment Plan (CIP)	\$250 M	\$300 M	\$300 M
PAYGo (% of CIP)	55%	45%	45%

\* Includes water sales, exchanges, and wheeling

## La Niña Lingers On

# ENSO METER

---



*Sea surface temperatures continue to run at colder-than-normal levels (shown in blue) in the equatorial part of the Pacific Ocean and La Niña is likely to last into at least the beginning part of the upcoming summer season. Map courtesy NOAA, [tropicaftidbits.com](http://tropicaftidbits.com)*

Since the December deluge, we have returned to more typical La Niña conditions. Hopefully we will have at least one more blast of rain before the end of winter.