



MWDOC Update to Mesa Water District

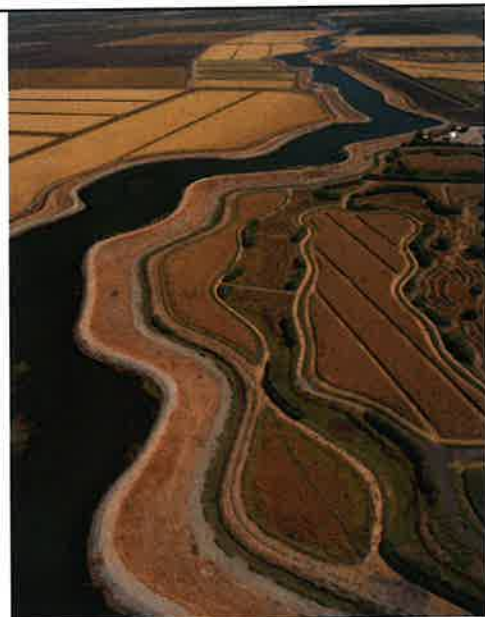
Harvey De La Torre, Assistant General Manager
Municipal Water District of Orange County

June 8, 2022



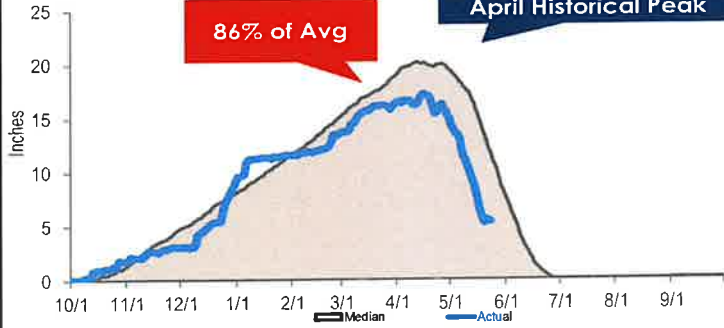
Overview

- 💧 Water Supply Conditions
 - 🔥 California Conditions
 - 🔥 Colorado Basin Conditions
- 💧 Metropolitan Updates
 - 🔥 State Water Project Dependent Areas
 - 🔥 Upcoming Activities
- 💧 MWDOC Update
 - 🔥 On-going projects of interest

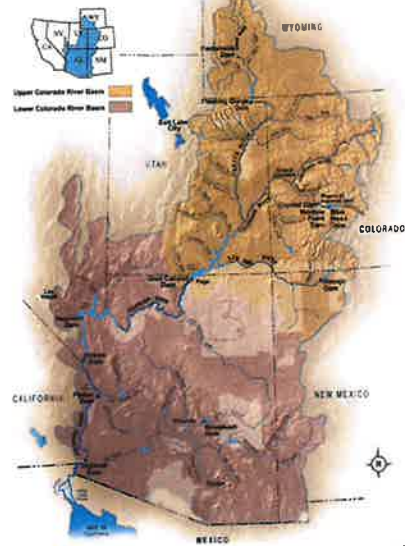


Colorado Basin Conditions

Colorado River Basin Snowpack Water Equivalent



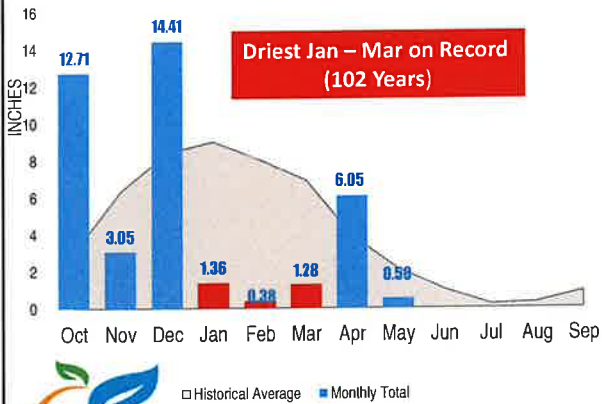
Colorado River Basin



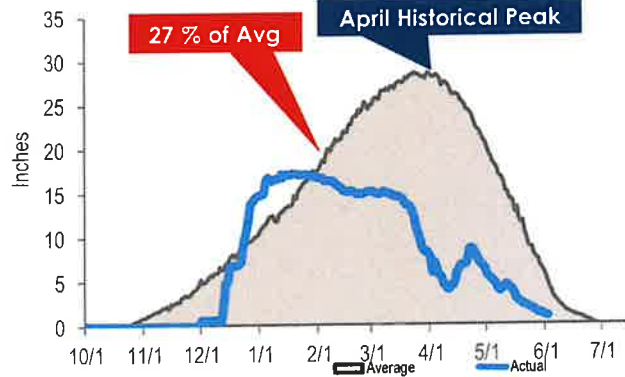
3

No. California Conditions

Monthly Precipitation (8 Station Index)



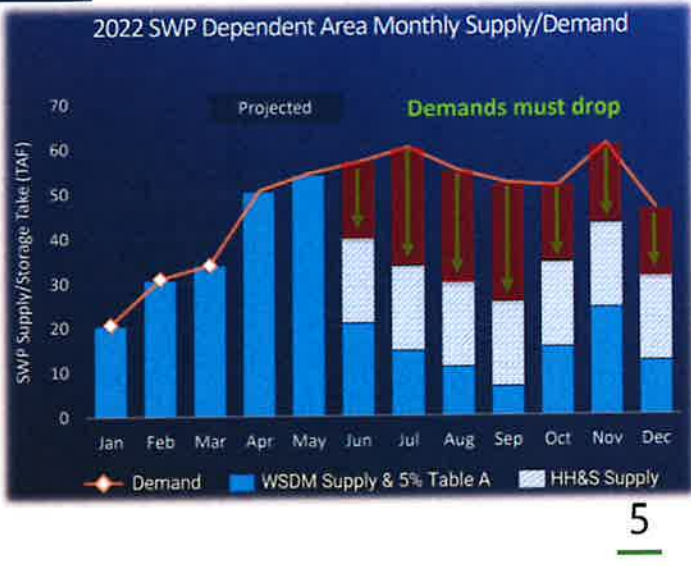
Northern Sierra Snowpack Water Equivalent



4

SWP & Impacts to MET

- 💧 Poor conditions resulted in a SWP "Table A" Allocation of 5%
- 💧 Lowest consecutive three year period on record
- 💧 DWR Implementing Health & Safety deliveries to SWP contractors
- 💧 Has required MET to implement extraordinary programs



State Water Project Dependent Areas



- 💧 Emergency Conservation Program is limited to these specific areas
- 💧 Emergency Water Conservation Program – Started June 1
- 💧 Two specified paths for compliance
- 💧 Workgroup focus on SWP drought actions and long term investments

Upcoming Metropolitan Activities

- Several upcoming items of interest
 - IRP Implementation Phase
 - Long Range Financial Plan Development
 - Review of Metropolitan Business Plan
 - Rate Structure Review
 - Organizational Review
- Integration & coordination of these plans and projects is critical



MWDOC Activities

- Reserve Fund Policy Review
 - First workgroup discussion – June 17th
- Member Agency Facilitated Discussion – Phase II
 - Phase 1 – Completed in April 2022
- Update of the O.C. Reliability Study
 - Building on MET’s 2020 IRP & recent climate modeling and analysis





Thank you for your attention.
Please let us know if you have
questions.