

PLAN
(PAD ONLY)

CONCRETE PAD
(REINFORCED WITH W.W.F.
1.6 X 1.6)

R.W. GATE VALVE (NRS)
W/HAND WHEEL (TYP 2)

APPROVED BACKFLOW
PREVENTION ASSEMBLY

LIMIT OF PRESSURE
TEST AND CHLORINATION

LIMIT OF MESA WATER
INSPECTION
CUSTOMER SPECIFIED
AND MAINTAINED PIPING

FLANGED D.I. 90°
BEND (TYP 2)

ADJUSTABLE
PIPE SUPPORT
(TYP 2)

D.I. SPOOL
(FLG X FLG)
OR (FLG X PE)

12" MIN.
36" MAX.

WATER PIPE

CONCRETE PAD ON
3" DEVICE OR LARGER

D.I. 90° BEND
(PO X FLG) OR
(PO X MJ RESTRAINED)

ELEVATION

SEE STD. DWG.
NO. 12

GENERAL NOTES:

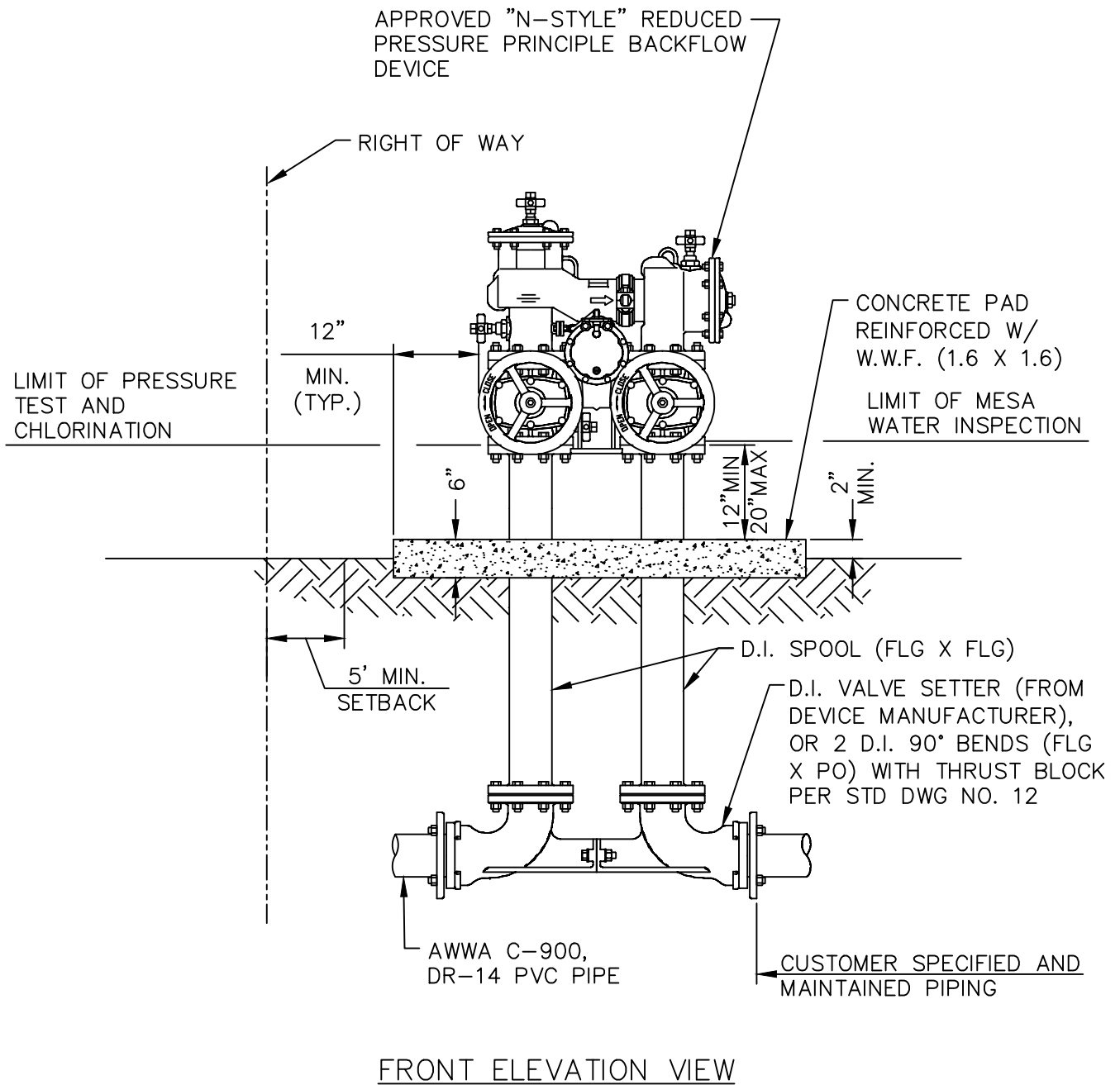
1. PRESSURE TEST AND CHLORINATE TO LIMITS SHOWN ABOVE
2. CONTACT MESA WATER FOR LATEST LIST OF APPROVED BACKFLOW PREVENTION ASSEMBLIES.
3. BACKFLOW ASSEMBLY SHALL BE A MINIMUM OF 36" FROM ANY STRUCTURE, CURB OR SIDEWALK.
4. BACKFLOW ASSEMBLY MUST BE EASILY ACCESSIBLE TO FACILITATE TESTING AND SERVICING.

"FOR DOMESTIC USE ONLY"

HEALTH HAZARD (CONTAMINANT) BACKFLOW PREVENTION DEVICE

mcwd#16.dwg 04/02/2018

| | | | |
|----------------------------|---|-------------------|--|
| MESA WATER DISTRICT | REDUCED PRESSURE PRINCIPLE ASSEMBLY (3" OR LARGER) | DRAWN BY: RJW | STANDARD DRAWING 16 |
| | | DATE: APR 2018 | |

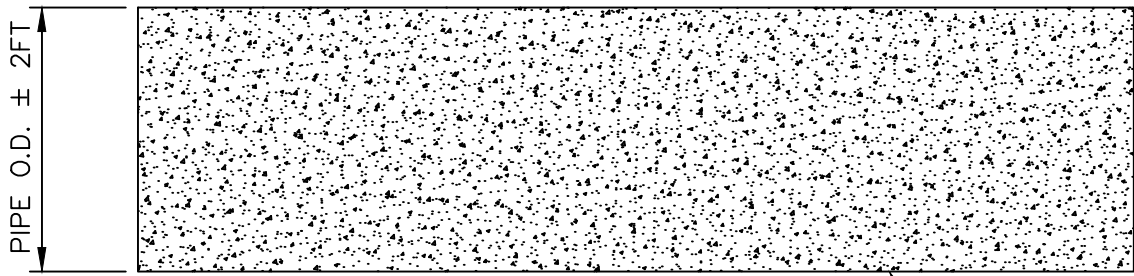


GENERAL NOTES:

1. PRESSURE TEST AND CHLORINATE TO LIMITS SHOWN ABOVE.
2. CONTACT MESA WATER FOR LATEST LIST OF APPROVED BACKFLOW PREVENTION ASSEMBLIES.
3. BACKFLOW ASSEMBLY SHALL BE A MINIMUM OF 36" FROM ANY STRUCTURE, CURB OR SIDEWALK.
4. BACKFLOW ASSEMBLY MUST BE EASILY ACCESSIBLE TO FACILITATE TESTING AND SERVICING.

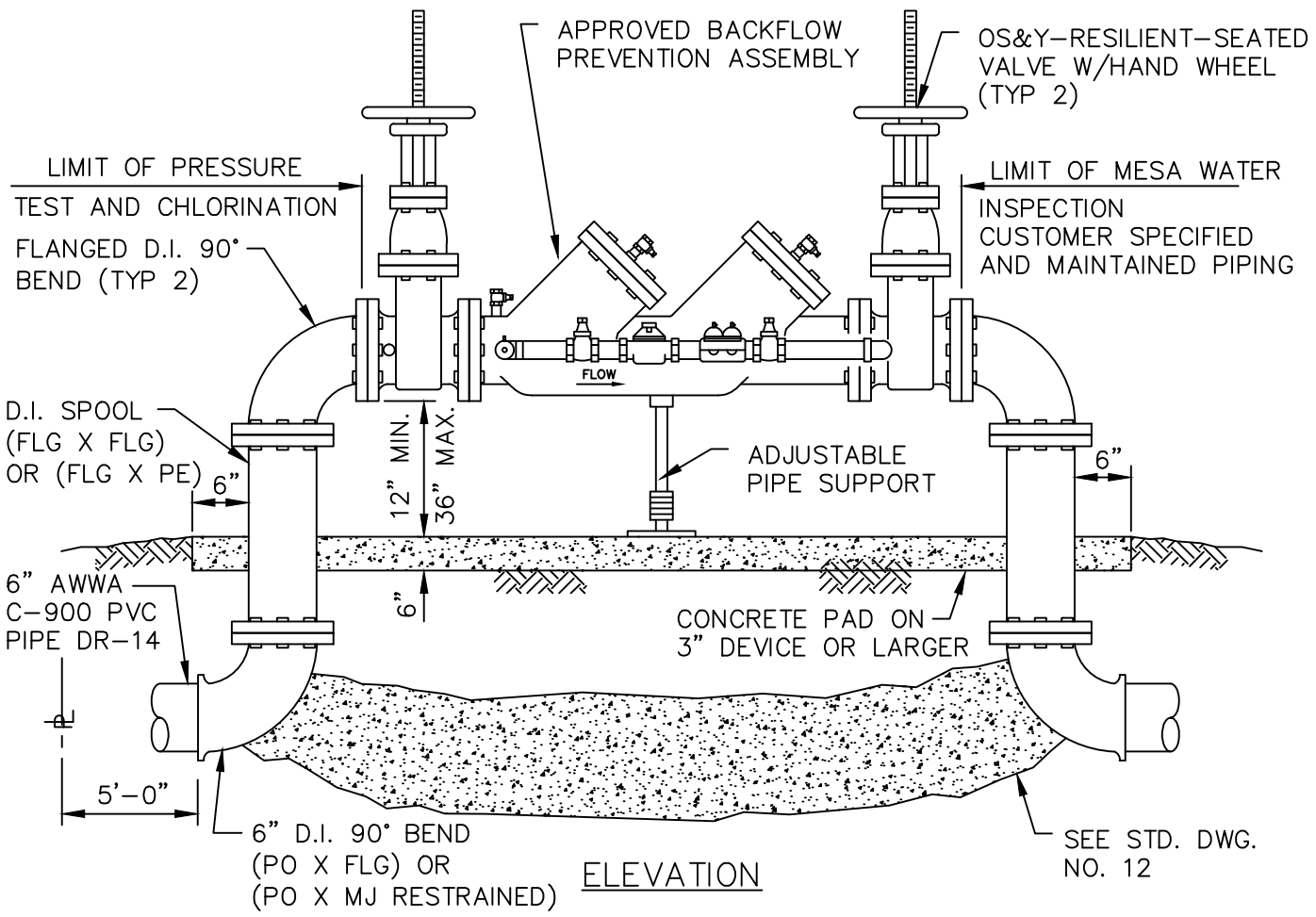
mcwd#16n.dwg 04/02/2018

| | | | |
|----------------------------|---|-------------------|---|
| MESA WATER DISTRICT | COMPACT REDUCED PRESSURE PRINCIPLE ASSEMBLY FOR LARGE SERVICES | DRAWN BY: RJW | STANDARD DRAWING 16N |
| | | DATE: APR 2018 | |



PLAN
(PAD ONLY)

CONCRETE PAD
(REINFORCED WITH W.W.F.
1.6 X 1.6)



ELEVATION

SEE STD. DWG.
NO. 12

GENERAL NOTES:

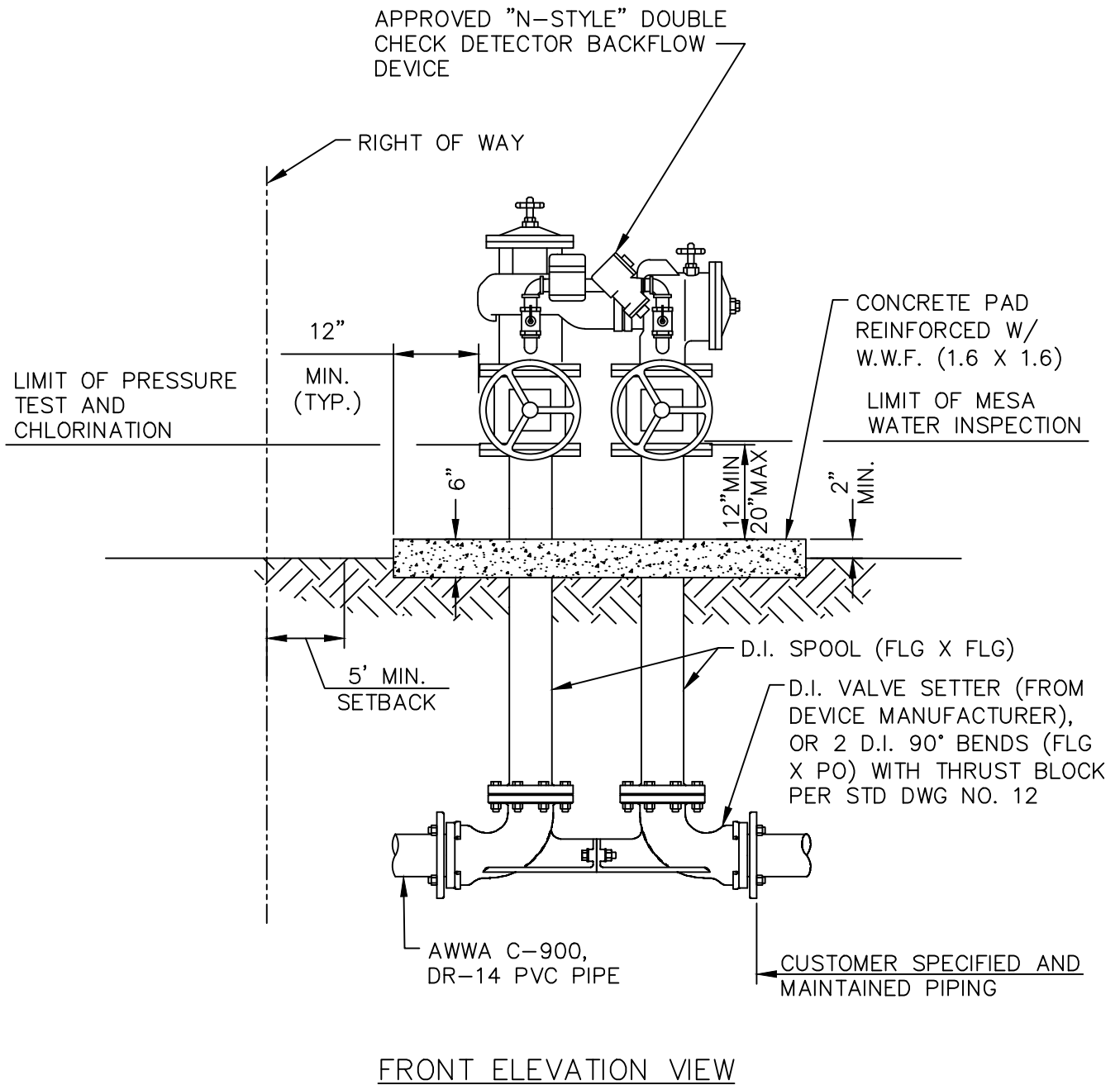
1. PRESSURE TEST AND CHLORINATE TO LIMITS SHOWN ABOVE
2. CONTACT MESA WATER FOR LATEST LIST OF APPROVED BACKFLOW PREVENTION ASSEMBLIES.
3. BY-PASS DETECTOR METER IN CUBIC FEET
4. BACKFLOW ASSEMBLY SHALL BE A MINIMUM OF 36" FROM ANY STRUCTURE, CURB OR SIDEWALK.
5. BACKFLOW ASSEMBLY MUST BE EASILY ACCESSIBLE TO FACILITATE TESTING AND SERVICING.

"FOR FIRE USE ONLY"

NON-HEALTH HAZARD (POLLUTANT) BACKFLOW PREVENTION DEVICE

mcwd#17.dwg 04/02/2018

| | | | |
|----------------------------|---------------------------------------|-------------------|--|
| MESA WATER DISTRICT | DOUBLE CHECK DETECTOR ASSEMBLY | DRAWN BY: RJW | STANDARD DRAWING 17 |
| | | DATE: APR 2018 | |

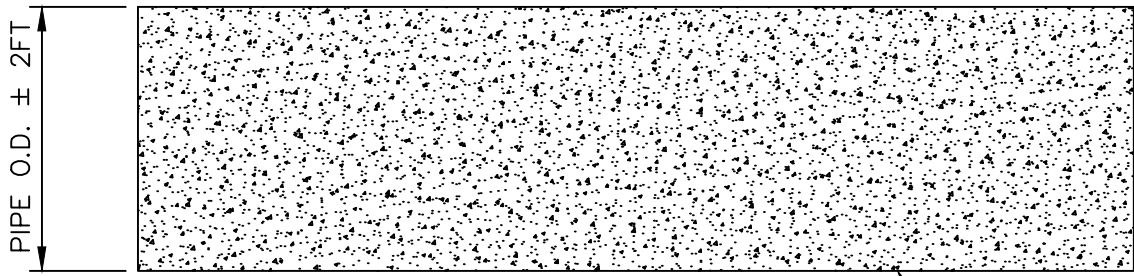


GENERAL NOTES:

1. PRESSURE TEST AND CHLORINATE TO LIMITS SHOWN ABOVE.
2. CONTACT MESA WATER FOR LATEST LIST OF APPROVED BACKFLOW PREVENTION ASSEMBLIES.
3. BACKFLOW ASSEMBLY SHALL BE A MINIMUM OF 36" FROM ANY STRUCTURE, CURB OR SIDEWALK.
4. BACKFLOW ASSEMBLY MUST BE EASILY ACCESSIBLE TO FACILITATE TESTING AND SERVICING.

mcwd#17n.dwg 04/02/2018

| | | | |
|----------------------------|---|-------------------|---|
| MESA WATER DISTRICT | COMPACT DOUBLE CHECK DETECTOR ASSEMBLY | DRAWN BY: RJW | STANDARD DRAWING 17N |
| | | DATE: APR 2018 | |



PLAN
(PAD ONLY)

CONCRETE PAD
(REINFORCED WITH W.W.F.
1.6 X 1.6)

R.W. GATE VALVE (NRS)
W/HAND WHEEL (TYP 2)

APPROVED BACKFLOW
PREVENTION ASSEMBLY

LIMIT OF PRESSURE
TEST AND CHLORINATION

LIMIT OF MESA WATER
INSPECTION
CUSTOMER SPECIFIED
AND MAINTAINED PIPING

FLANGED D.I. 90°
BEND (TYP 2)

ADJUSTABLE
PIPE SUPPORT
(TYP 2)

D.I. SPOOL
(FLG X FLG)
OR (FLG X PE)

12" MIN.
36" MAX.

WATER PIPE

CONCRETE PAD ON
3" DEVICE OR LARGER

D.I. 90° BEND
(PO X FLG) OR
(PO X MJ RESTRAINED)

ELEVATION

SEE STD. DWG.
NO. 12

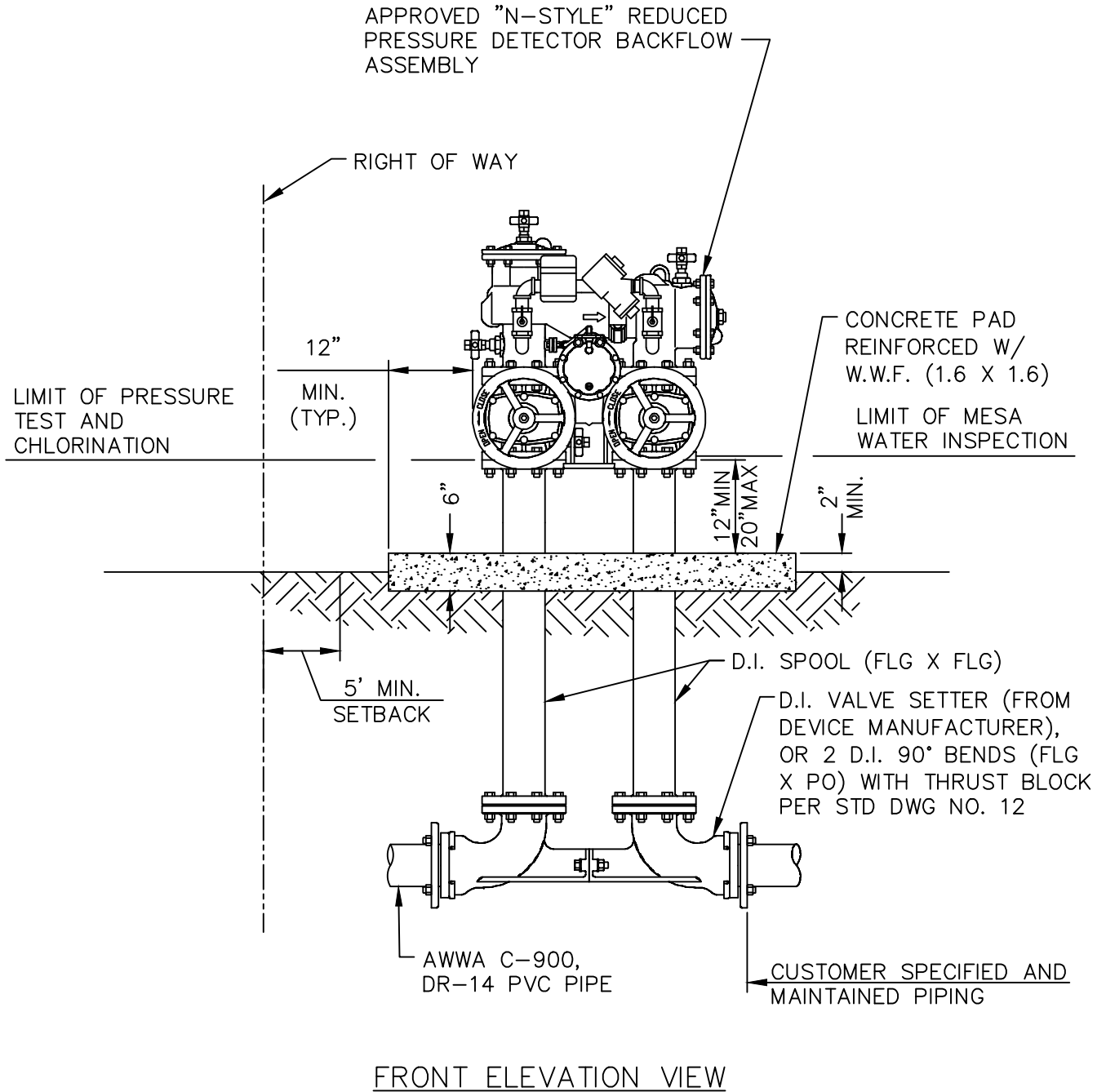
GENERAL NOTES:

1. PRESSURE TEST AND CHLORINATE TO LIMITS SHOWN ABOVE
2. CONTACT MESA WATER FOR LATEST LIST OF APPROVED BACKFLOW PREVENTION ASSEMBLIES.
3. BACKFLOW ASSEMBLY SHALL BE A MINIMUM OF 36" FROM ANY STRUCTURE, CURB OR SIDEWALK.
4. BACKFLOW ASSEMBLY MUST BE EASILY ACCESSIBLE TO FACILITATE TESTING AND SERVICING.

"FOR DOMESTIC USE ONLY"
HEALTH HAZARD (CONTAMINANT) BACKFLOW PREVENTION DEVICE

mcwd#21.dwg 04/02/2018

| | | | |
|----------------------------|--|---|---|
| MESA WATER DISTRICT | REDUCED PRESSURE DETECTOR ASSEMBLY (3" OR LARGER) | <small>DRAWN BY:</small> RJW <small>DATE:</small> APR 2018 | <small>STANDARD DRAWING</small> 21 |
|----------------------------|--|---|---|



GENERAL NOTES:

1. PRESSURE TEST AND CHLORINATE TO LIMITS SHOWN ABOVE.
2. CONTACT MESA WATER FOR LATEST LIST OF APPROVED BACKFLOW PREVENTION ASSEMBLIES.
3. BACKFLOW ASSEMBLY SHALL BE A MINIMUM OF 36" FROM ANY STRUCTURE, CURB OR SIDEWALK.
4. BACKFLOW ASSEMBLY MUST BE EASILY ACCESSIBLE TO FACILITATE TESTING AND SERVICING.

mcwd#21n.dwg 04/02/2018

| | | | |
|----------------------------|--|-------------------|---|
| MESA WATER DISTRICT | COMPACT REDUCED PRESSURE DETECTOR ASSEMBLY FOR LARGE SERVICES | DRAWN BY: RJW | STANDARD DRAWING 21N |
| | | DATE: APR 2018 | |

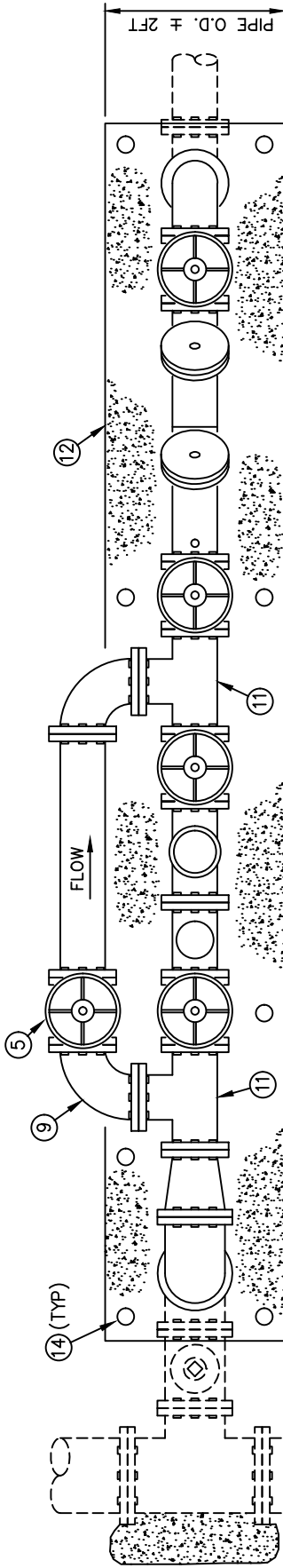
MESA WATER DISTRICT

RPP OR DCV APPROVED BACKFLOW ASSEMBLY (3",4",6" & 8" METER INST.)

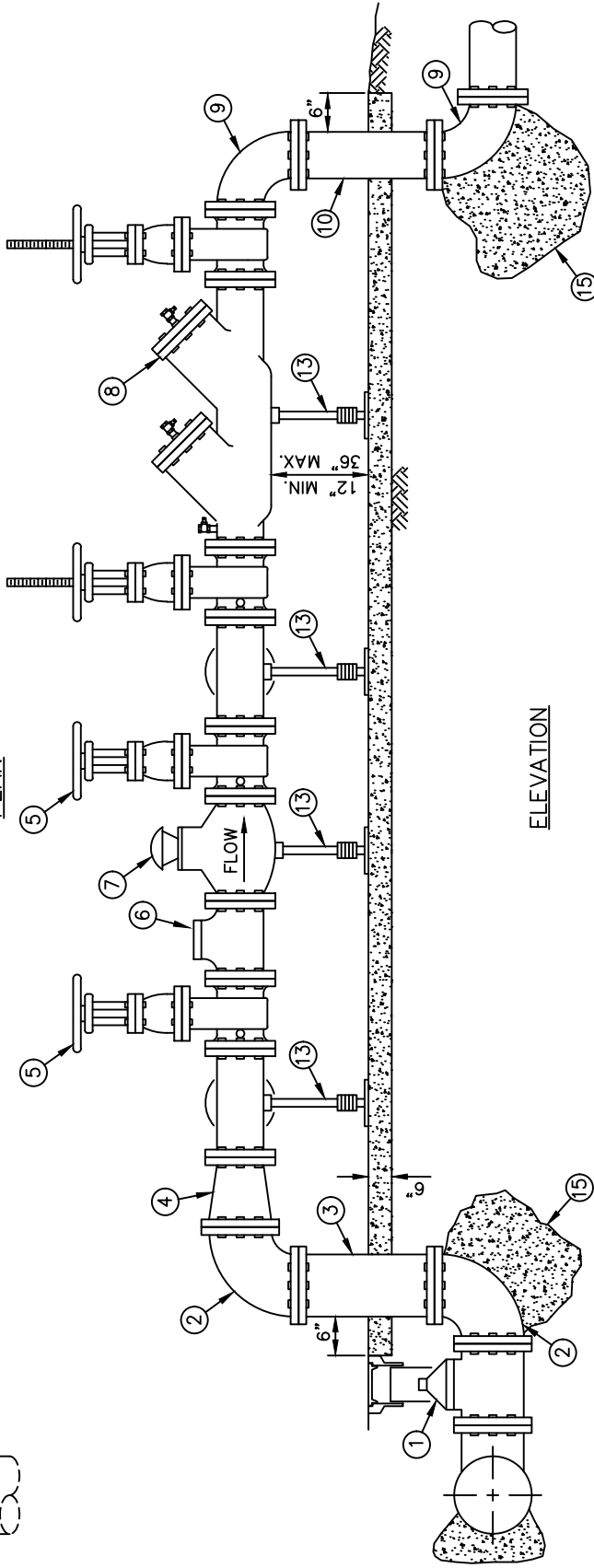
DRAWN BY: RJW
DATE: APR 2018

STANDARD DRAWING

22



PLAN



ELEVATION

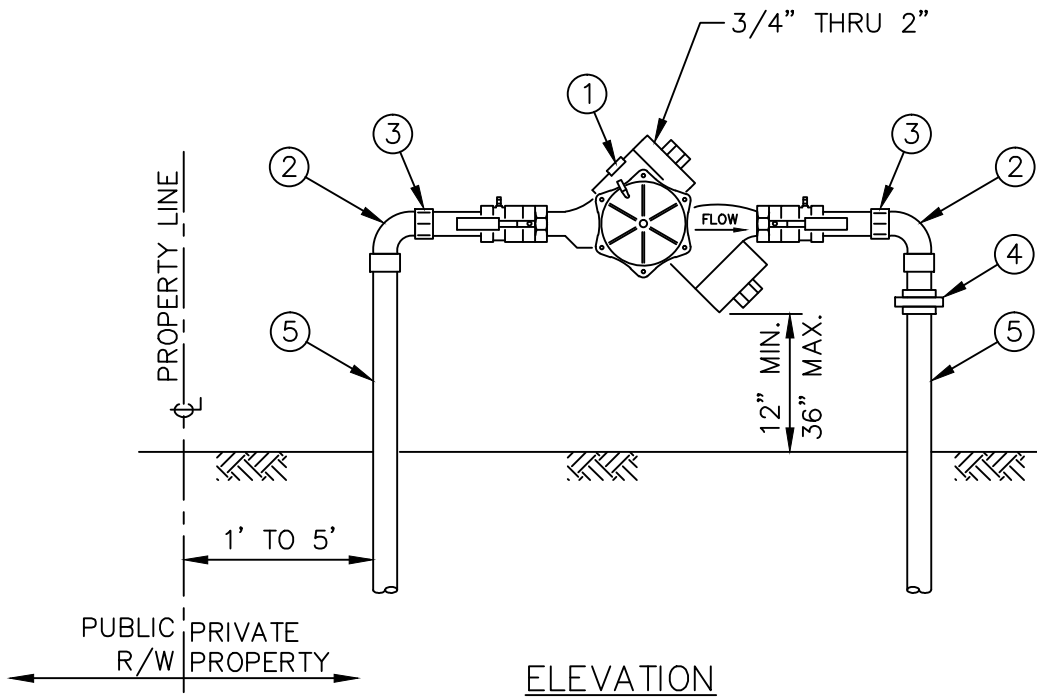
LEGEND OF MATERIAL:

ITEM NO. SIZE & DESCRIPTION

- ① 6" R.W. GATE VALVE (FLG. x FLG.)
- ② 6"-90° D.I. BEND (FLG. x FLG.)
- ③ 6" D.I. SPOOL (FLG. x FLG.)
- ④ 6" D.I. REDUCER (FLG. x FLG.)
- ⑤ R.W. GATE VALVE WITH HANDWHEEL (NRS) (FLG. x FLG.)
- ⑥ D.I. STRAINER (FLG. x FLG.)
- ⑦ COMPOUND METER OR TURBO METER (FLG. x FLG.) PURCHASED FROM MESA WATER AND INSTALLED BY CONTRACTOR
- ⑧ APPROVED REDUCED PRESSURE PRINCIPLE BACKFLOW PREVENTION ASSEMBLY OR APPROVED DOUBLE CHECK VALVE ASSEMBLY (FLG. x FLG.)
- ⑨ 90° ELL (FLG. x FLG.)
- ⑩ D.I. SPOOL (FLG. x FLG.)
- ⑪ D.I. TEE (FLG. x FLG.)
- ⑫ CONCRETE PAD REINFORCED W/ W.W.F. 1.6 X 1.6
- ⑬ ADJUSTABLE PIPE SUPPORTS
- ⑭ STANDARD POST PER STD DWG NO. 4B.
- ⑮ CONCRETE THRUST BLOCK PER STD DWG NO. 12

GENERAL NOTES:

- 1. DIMENSIONS SHOWN ARE APPROXIMATE, AND ARE BASED ON AN ASSUMED METER LENGTH OF 20". CONTRACTOR SHALL SUBMIT SHOP DRAWINGS TO MESA FOR REVIEW PRIOR TO CONSTRUCTION.
- 2. R.W. VALVES IN METER ASSEMBLY TO BE LOCKED (BY CHAIN) IN TO OPEN POSITION R.W. VALVE IN BYPASS TO BE LOCKED (BY CHAIN) IN THE CLOSED POSITION.
- 3. ASSEMBLY MUST BE EASILY ACCESSIBLE TO FACILITATE TESTING AND SERVICING.



LEGEND OF MATERIAL:

- | ITEM NO. | SIZE & DESCRIPTION |
|----------|---------------------------------------|
| ① | APPROVED BACKFLOW PREVENTION ASSEMBLY |
| ② | SOLDER 90° ELL |
| ③ | MIP SOLDER ADAPTER |
| ④ | SOLDER UNION |
| ⑤ | TYPE "K" SOFT COPPER OR BRASS |

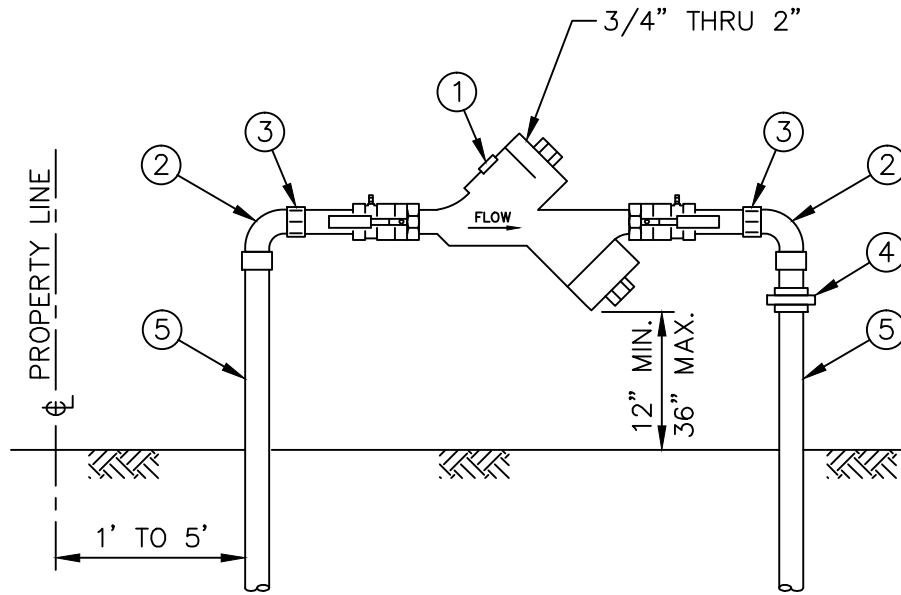
GENERAL NOTES:

1. USE MESA WATER CURRENT LIST OF DEVICES THAT HAVE BEEN EVALUATED AND APPROVED BY THE STATE OF CALIFORNIA OFFICE OF DRINKING WATER. THIS LIST HAS BEEN ADOPTED BY MESA WATER AS THE ONLY ASSEMBLIES APPROVED FOR USE ON THE WATER LINES UNDER OUR JURISDICTION.
2. TO ENSURE APPROPRIATE FLOW PLEASE CHECK WITH THE CITY PLUMBING INSPECTOR FOR SIZING.
3. ALL BACKFLOW PREVENTION DEVICES SHALL BE TESTED BY A CERTIFIED TESTER AFTER INSTALLATION, RELOCATION OR REPAIR.
4. BACKFLOW MUST BE EASILY ACCESSIBLE TO FACILITATE TESTING AND SERVICING.

HEALTH HAZARD (CONTAMINANT) BACKFLOW PREVENTION DEVICE

mcwd#23.dwg 04/02/2018

| | | | |
|----------------------------|---|-------------------|--|
| MESA WATER DISTRICT | REDUCED PRESSURE PRINCIPLE BACKFLOW DEVICE (2" OR SMALLER) | DRAWN BY: RJW | STANDARD DRAWING 23 |
| | | DATE: APR 2018 | |



ELEVATION

LEGEND OF MATERIAL:

ITEM NO. SIZE & DESCRIPTION

- ① APPROVED BACKFLOW PREVENTION ASSEMBLY
- ② SOLDER 90° ELL
- ③ MIP SOLDER ADAPTER
- ④ SOLDER UNION
- ⑤ TYPE "K" SOFT COPPER OR BRASS

GENERAL NOTES:

1. USE MESA WATER CURRENT LIST OF DEVICES THAT HAVE BEEN EVALUATED AND APPROVED BY THE STATE OF CALIFORNIA OFFICE OF DRINKING WATER. THIS LIST HAS BEEN ADOPTED BY MESA WATER AS THE ONLY ASSEMBLIES APPROVED FOR USE ON THE WATER LINES UNDER OUR JURISDICTION.
2. TO ENSURE APPROPRIATE FLOW PLEASE CHECK WITH THE CITY PLUMBING INSPECTOR FOR SIZING.
3. ALL BACKFLOW PREVENTION DEVICES SHALL BE TESTED BY A CERTIFIED TESTER AFTER INSTALLATION, RELOCATION OR REPAIR.
4. BACKFLOW MUST BE EASILY ACCESSIBLE TO FACILITATE TESTING AND SERVICING.

HEALTH HAZARD (POLLUTANT) BACKFLOW PREVENTION DEVICE

mcwd#24.dwg 04/02/2018

| | | | |
|----------------------------|---|-------------------|--|
| MESA WATER DISTRICT | DOUBLE CHECK VALVE ASSEMBLY (2" AND SMALLER) | DRAWN BY: RJW | STANDARD DRAWING 24 |
| | | DATE: APR 2018 | |