

Presentation and
Discussion Item 7



MWDOC Update to Mesa Water District

Harvey De La Torre, Interim General Manager
June 14, 2023



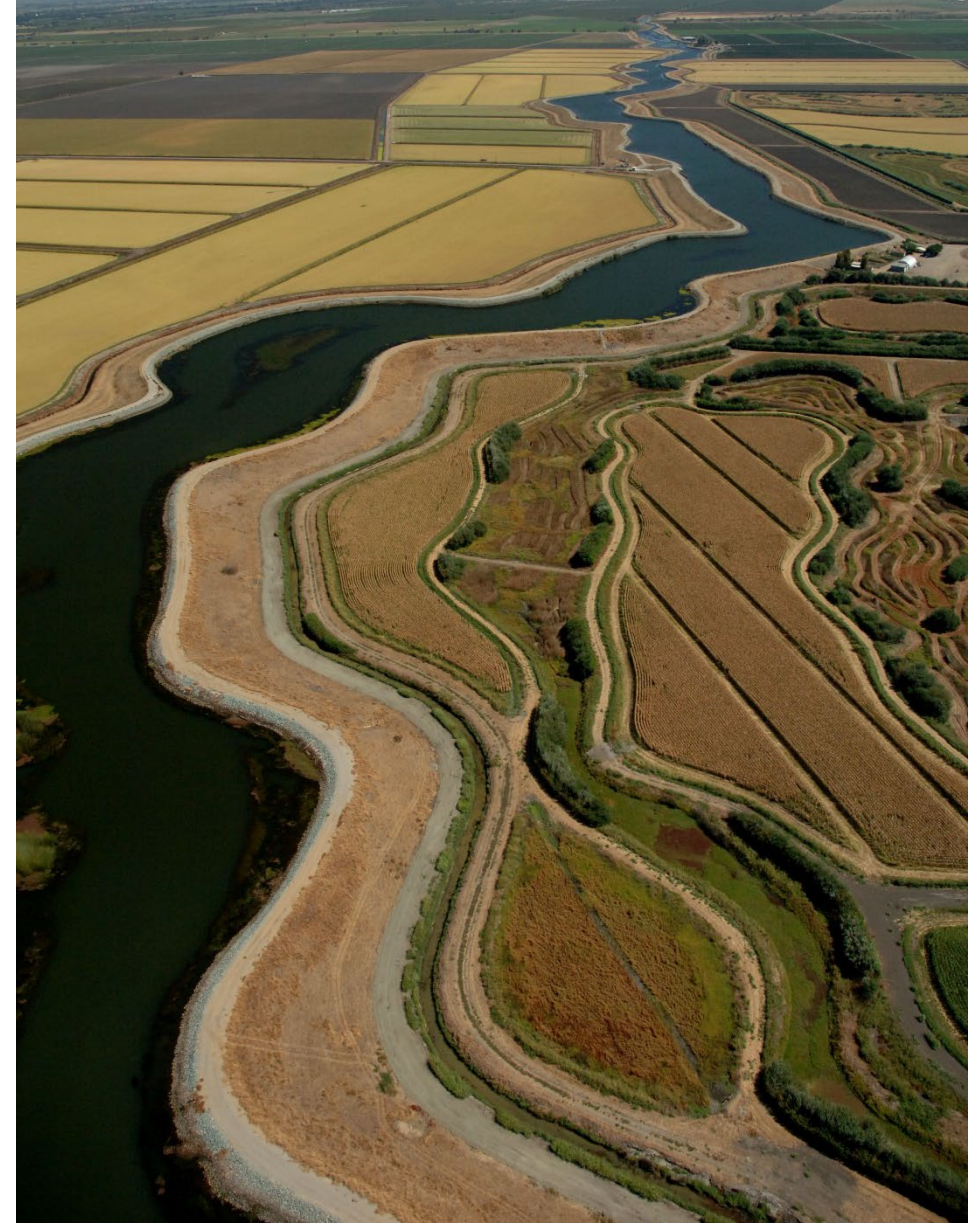
Overview

Water Supply & Demand Conditions

- SWP 100% “Table A” Allocation
- Colorado River Conditions
- Projected Demands & Storage for 2023

Metropolitan Activities

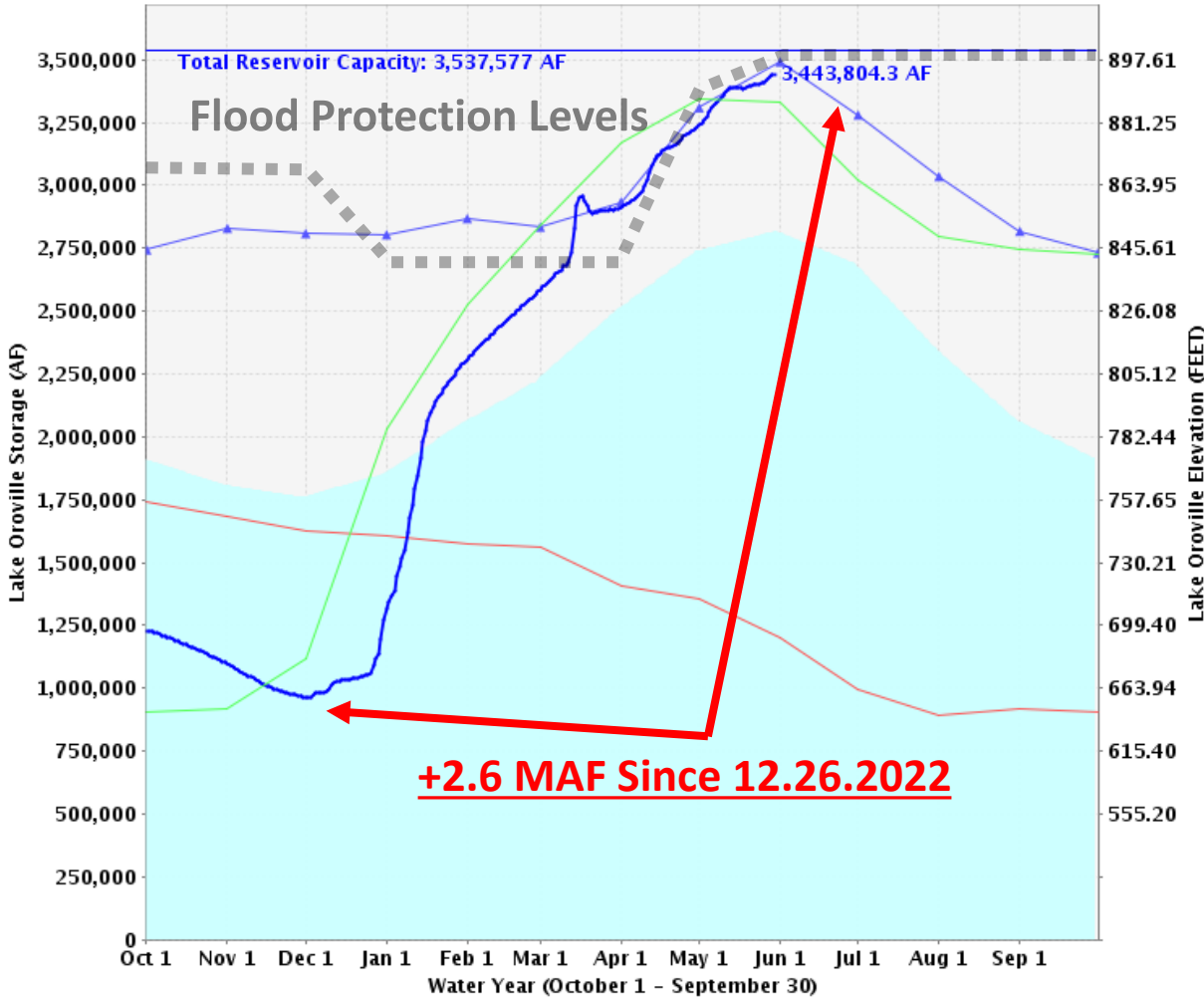
- MET Rates for 2023 & 2024
- Colorado River Lower Basin State’s Plan
- Status of Regional Recycling Project (Carson)



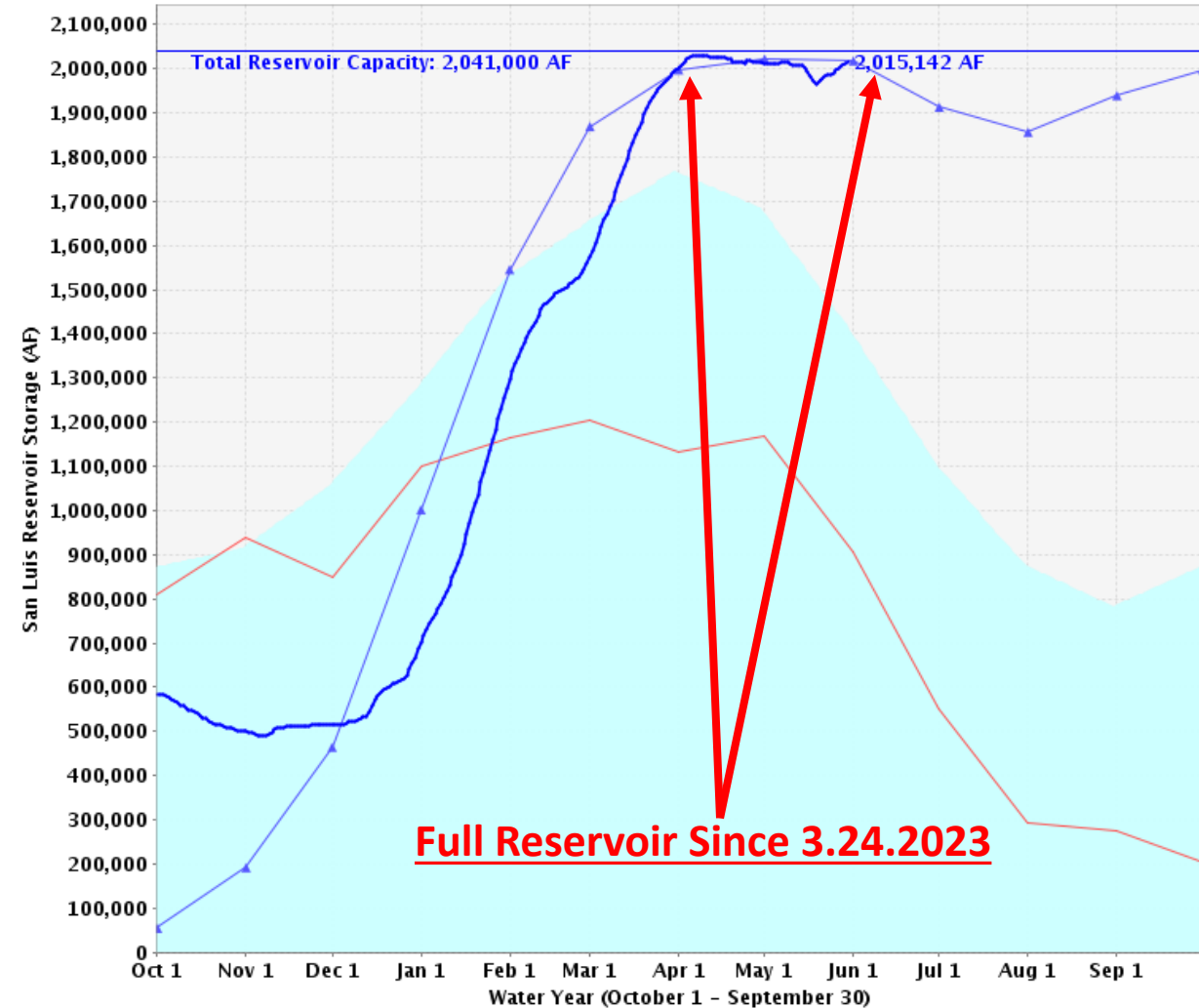
Lake Oroville & San Luis Storage Levels



Lake Oroville Storage Levels



San Luis Reservoir Storage Levels



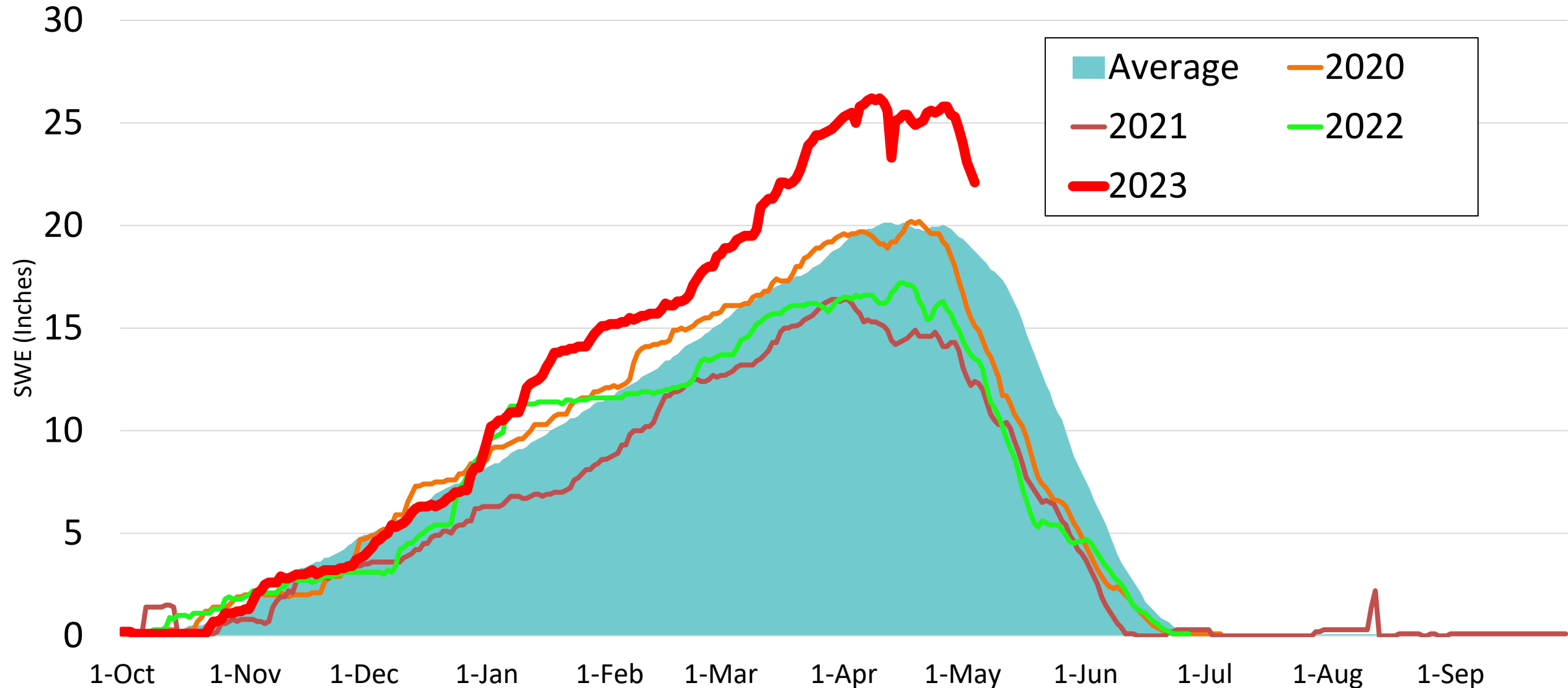
■ Historical Average
 — Total Reservoir Capacity
 — 1976-1977 (dry)
 — 1982-1983 (wet)
 — 2022-2023(current)
 — 1977-1978

■ Historical Average
 — Total Reservoir Capacity
 — 1976-1977 (dry)
 — 1982-1983 (wet)
 — 2022-2023(current)

Colorado River Basin Snow Water Equivalent



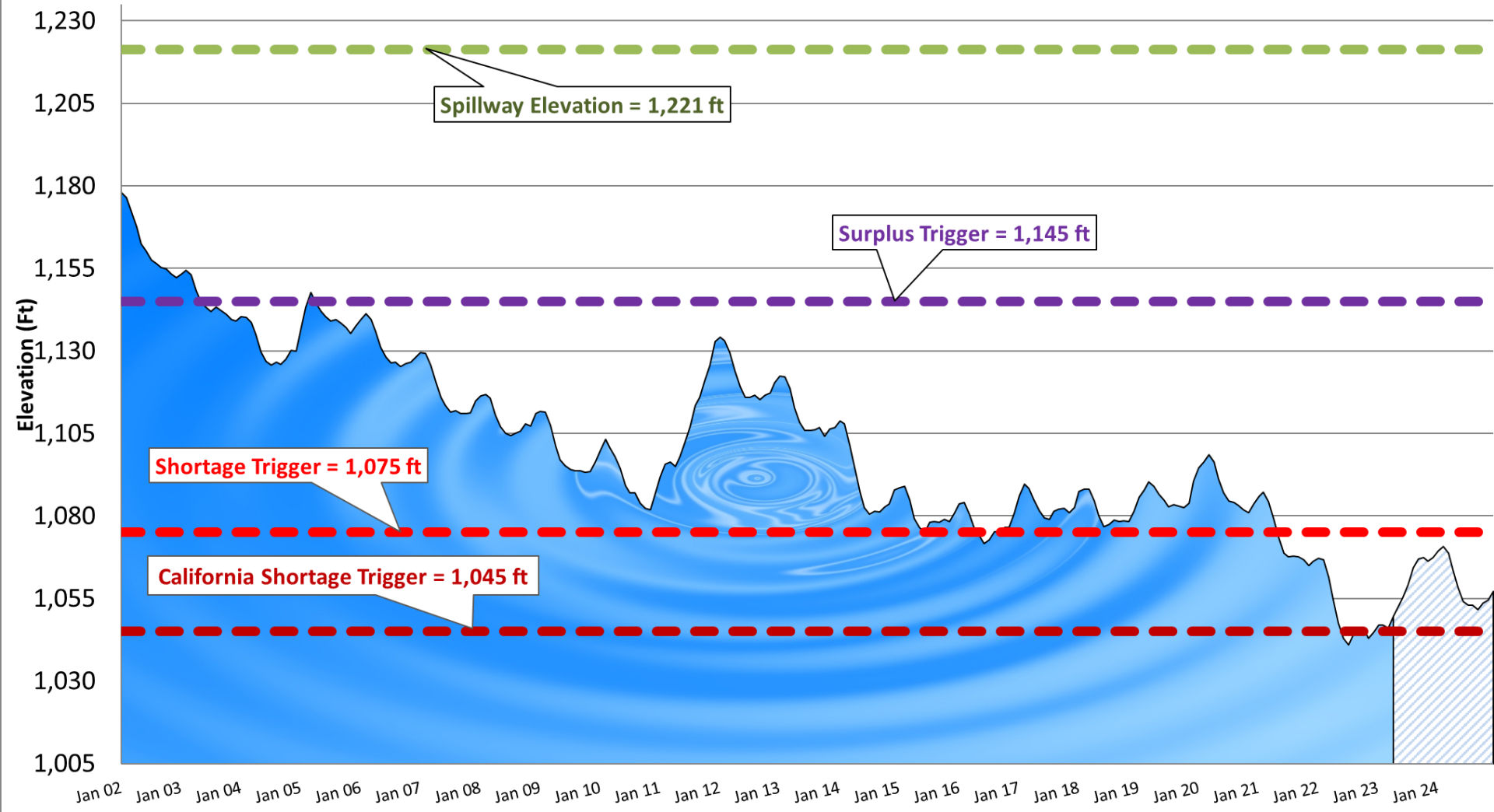
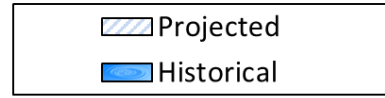
Historical Colorado River Basin SWE



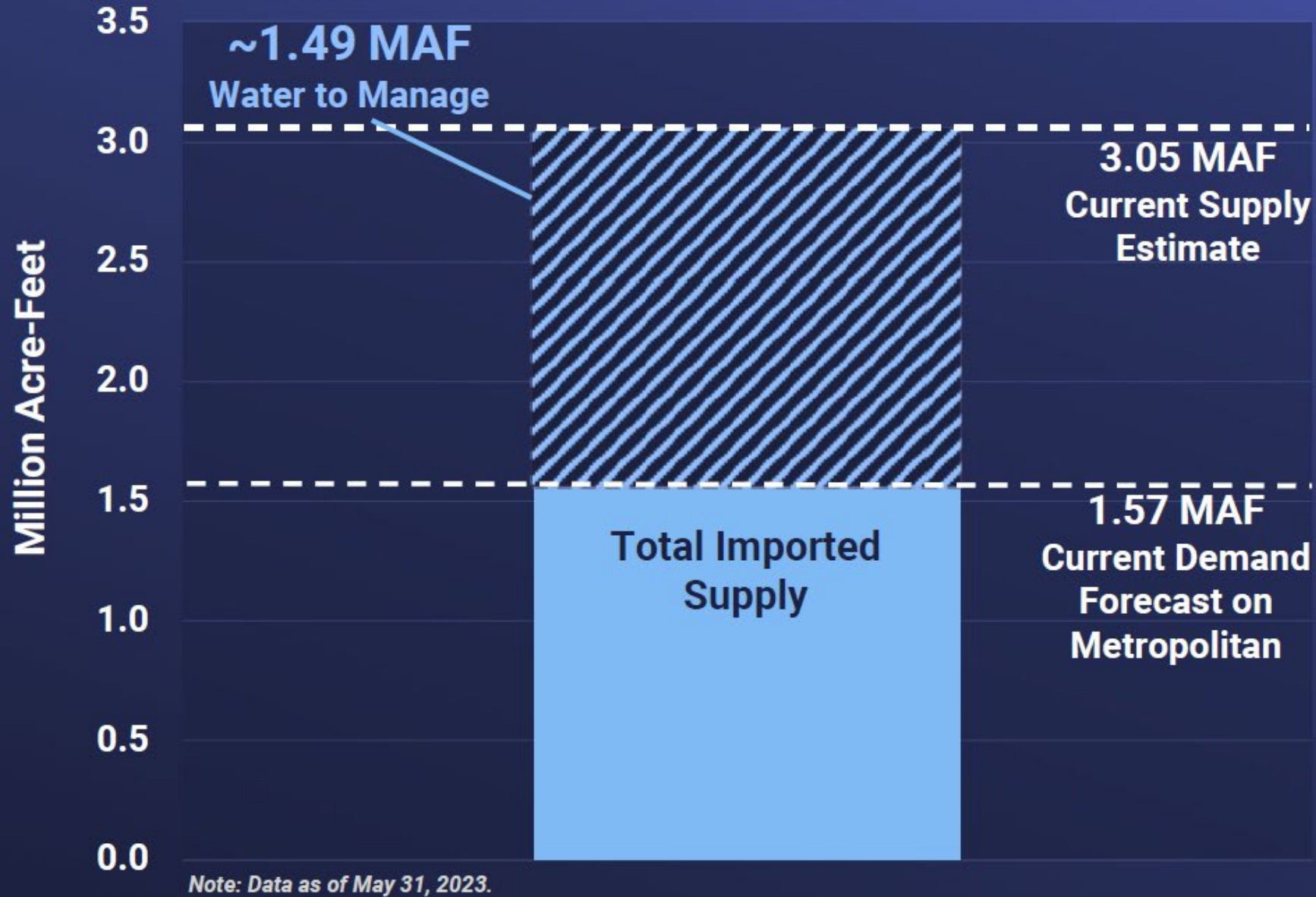
Lake Mead Estimated 24 Month Projected Levels



Lake Mead Levels: Historical and Projected
projection per USBR 24-Month Study

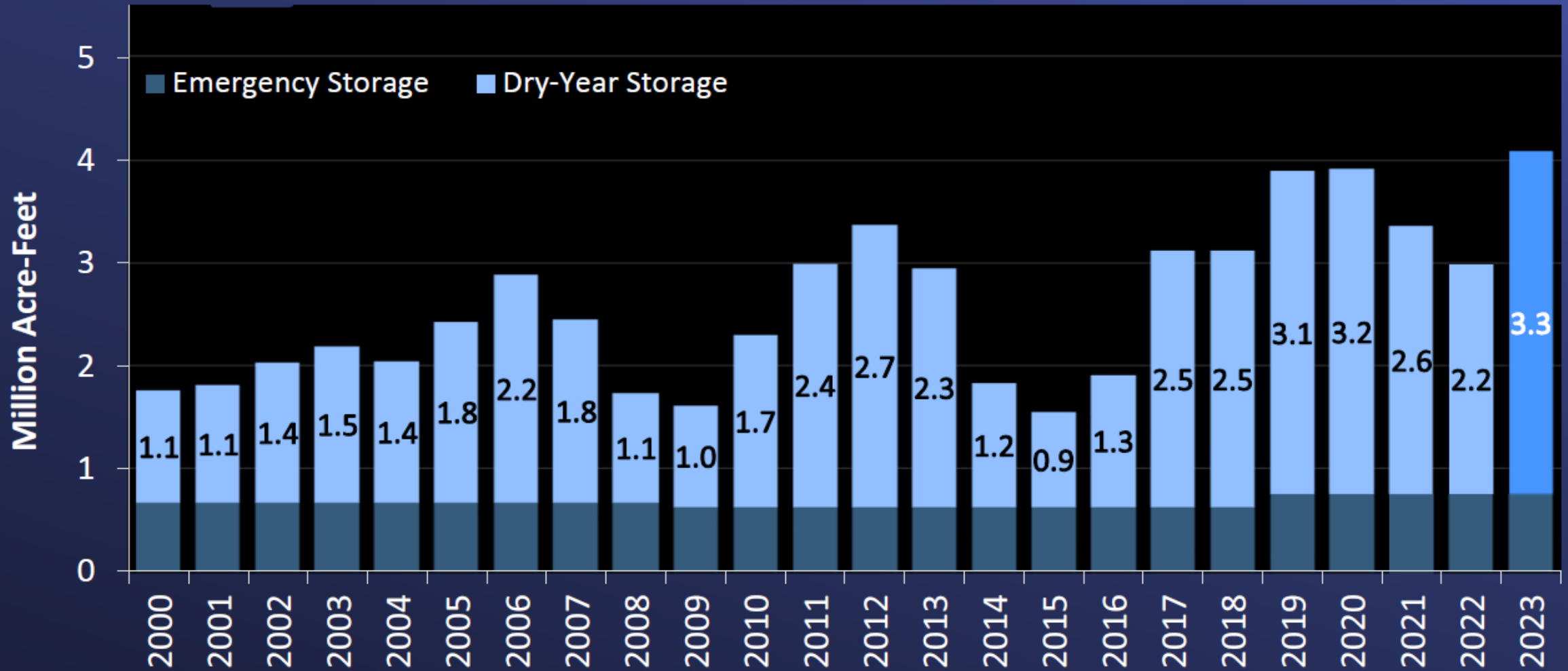


2023 Water Supply/Demand Balance: Regional View



Metropolitan Projecting to Refill Storage Accounts

End-of-Year Balances



Note:

2023 end-of-year balance is preliminary as they are subject to DWR adjustments and USBR final accounting.

Adopted MET Rates and Charges

Rates & Charges Effective Jan. 1	2023 (Current)	2024 (Approved)
Tier 1 Supply Rate (\$/AF)	\$321	\$332
Tier 2 Supply Rate (\$/AF)	\$530	\$531
System Access Rate (\$/AF)	\$368	\$389
Water Stewardship Rate (\$/AF)	\$0	\$0
System Power Rate (\$/AF)	\$166	\$182
Full Service Untreated Volumetric Costs (\$/AF)		
Tier 1	\$855	\$903
Tier 2	\$1,064	\$1,102
Treatment Surcharge (\$/AF)	\$354	\$353
Full Service Treated Volumetric Costs (\$/AF)		
Tier 1	\$1,209	\$1,256
Tier 2	\$1,418	\$1,455
Readiness-to-Serve Charge (\$M)	\$154	\$167
Capacity Charge (\$/cfs)	\$10,600	\$11,200
Overall Rate Increase	5.0%	5.0%



Lower Basin Plan Terms

Lower Basin Plan does not require the Secretary to unilaterally exercise her authorities to implement reductions or contemplate any waiver of those authorities

New Conservation

- Minimum of 3 million acre-feet (maf) of system conservation in 2023-2026
 - At least 1.5 maf by end of 2024
- New conservation up to 2.3 maf will be federally compensated under IRA
 - Compensated conservation will be mandatory, enforceable, measurable, verifiable, and non-retrievable

Phase 1 - Program Schedule



Environmental
Planning

IN PROGRESS



Early Delivery
Projects

IN PROGRESS



Design and
Construction

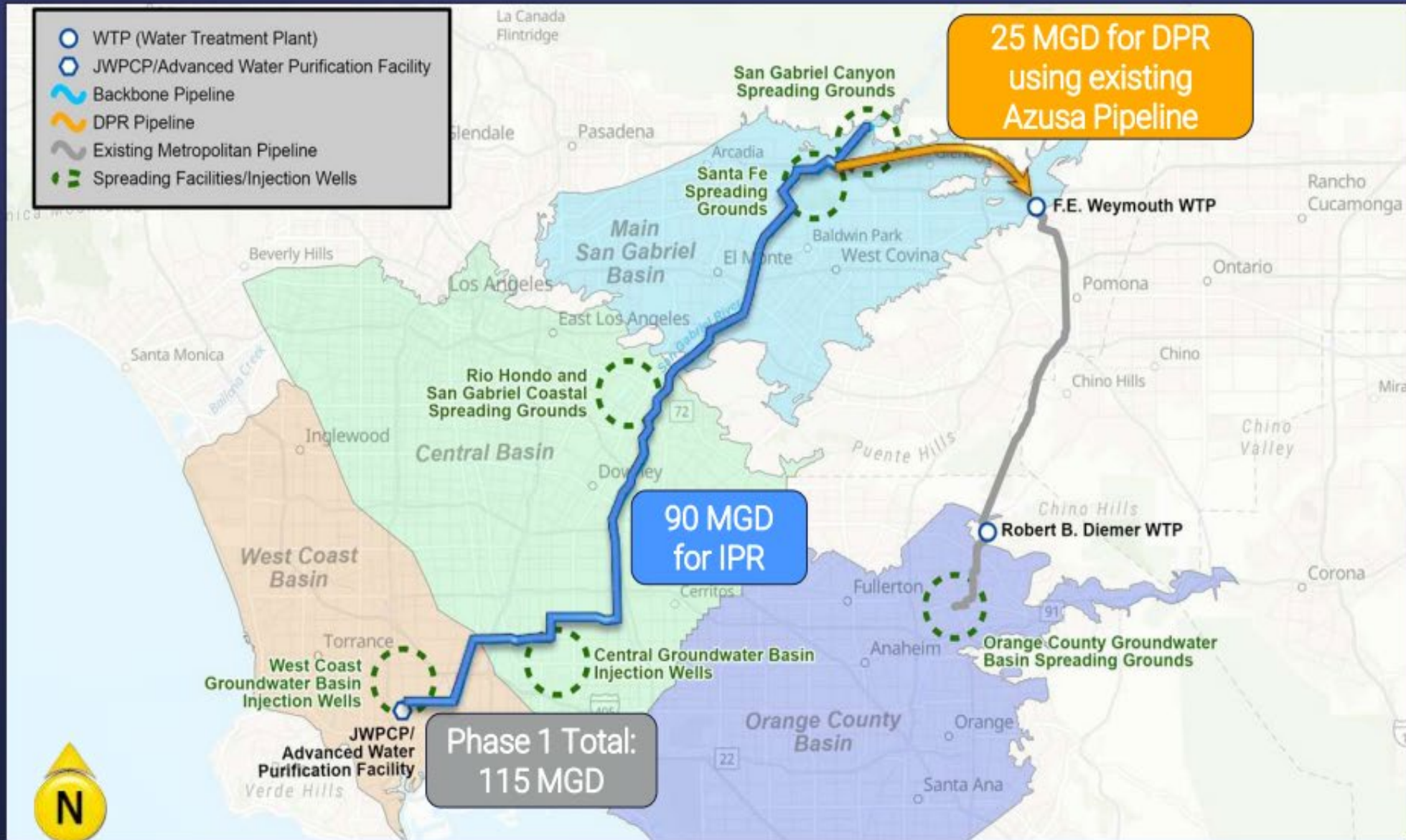
FUTURE



Start-up and
Operations

FUTURE

Program Overview – Phase 1



Program Overview – Phase 2





Thank you for your attention.
Please **let us know** if you have questions.

Backup Slides



MET Key Budget Assumptions as Adopted



Fiscal Year Ending	2023	2024
Overall increase January	5.0%	5.0%
Total Water Transactions*	1.59 MAF	1.54 MAF
State Water Project Allocation	15% / 40%	40% / 50%
Colorado River Aqueduct Div.	1.007 MAF	0.923 MAF
Capital Investment Plan (CIP)	\$300 M	\$300 M
PAYGo (% of CIP)	45%	45%

* Includes water sales, exchanges, and wheeling

Next Steps: Climate Adaptation Master Plan



Planning Process Goals

- Memorialize issues raised in the February Board Retreat
- Provide context and high-level goals
- Initiate mutual understanding around key terms
- Identify policy and planning issues to be addressed through the planning process

Key Terms

- Reliability
- Resiliency
- Financial Sustainability
- Affordability