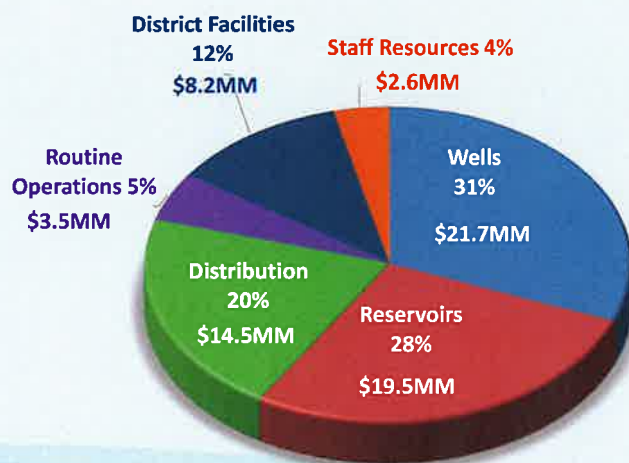


Overview

- 5 CIPR Programs
- 17+ Projects
- FY20 through FY23

CIPR PROGRAM (\$70MM)



Wells Program

- Chandler & Croddy Wells and Pipeline Project
 - Demolition
 - Well Drilling
 - Well Equipment
 - Pipeline Construction



3 | December 14, 2022

Croddy Well Site
December 2022



Wells Program



4 | December 14, 2022

Chandler Well Site
December 2022



Wells Program

Pipeline

Phase 2:
2,200 LF of 16" DIP

Phase 1:
2,300 LF of 30" DIP



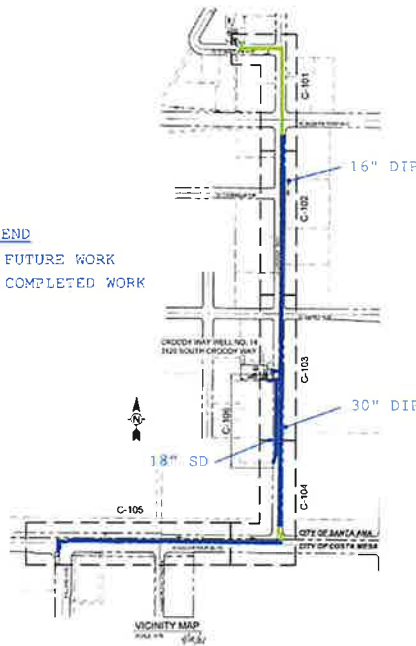
5 | December 14, 2022



Wells Program

Pipeline

LEGEND
 — FUTURE WORK
 — COMPLETED WORK



6 | December 14, 2022



Wells Program

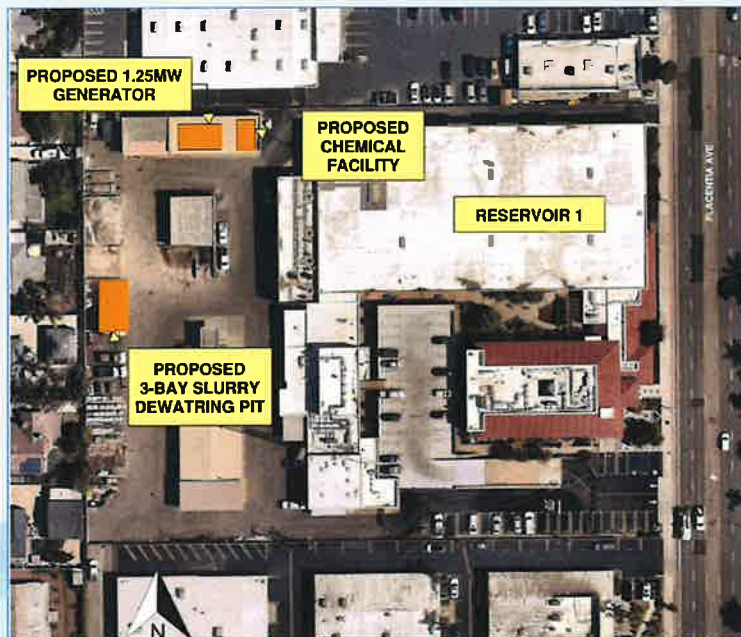
**Chandler &
Croddy Well Pipeline**
December 2022



7 | December 14, 2022



Reservoirs Program



8 | December 14, 2022



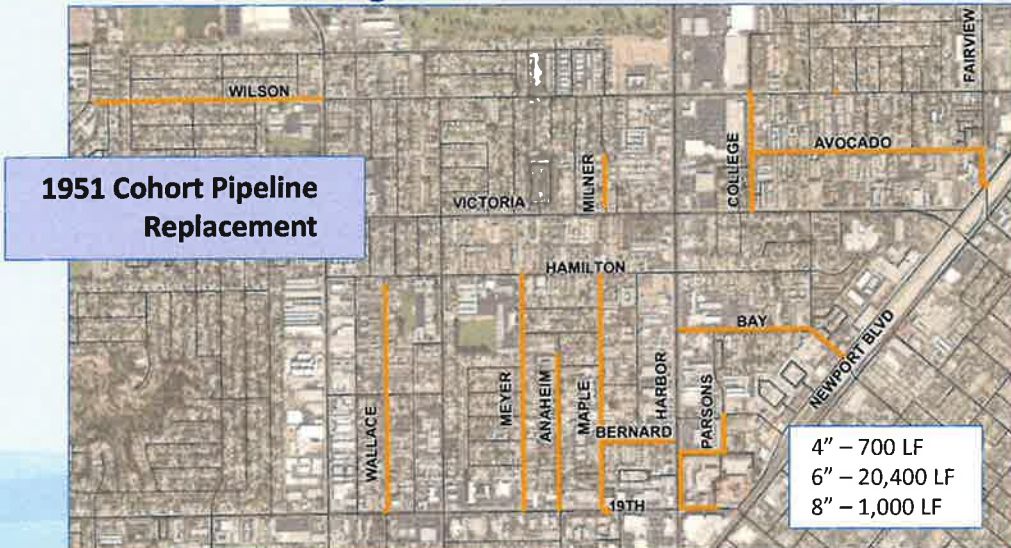
Reservoirs Program



9 | December 14, 2022



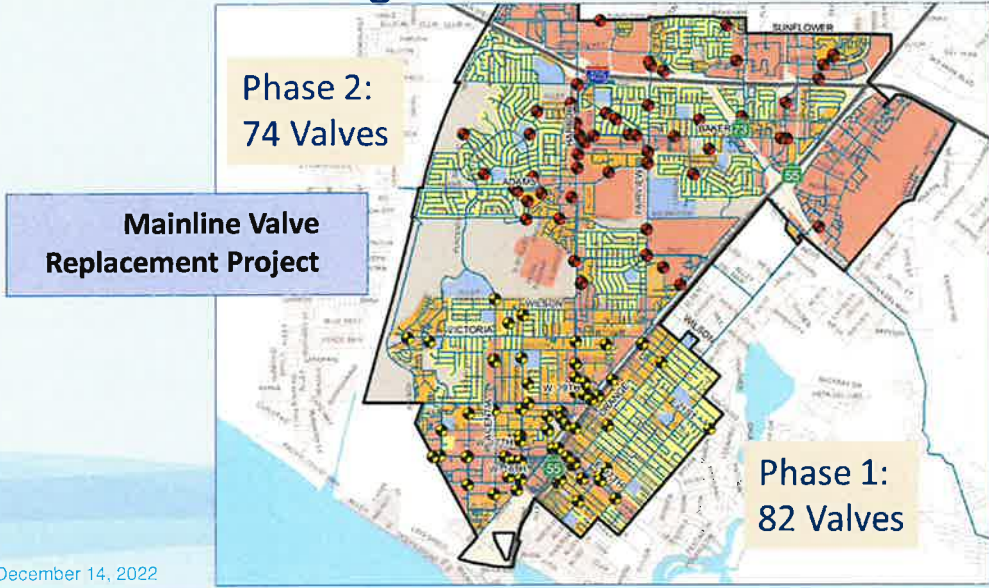
Distribution Program



10 | December 14, 2022



Distribution Program



11 | December 14, 2022



Distribution Program



Mainline Valve Replacement Project

12 | December 14, 2022



Distribution Program

Service Lines: ~40



Plastic Service Line Replacement Project



Routine Planned Capital

Description	Plan Qty	Actual Qty	Plan Cost (\$)	Actual Costs (\$)
Hydrants	29	33	\$127,000	\$161,000
Mainline Valves	10	15	\$53,000	\$48,000
Service Lines	4	4	\$9,000	\$9,000
Small Meters	577	387	\$56,000	\$45,000
Large Meters	38	35	\$26,000	\$21,000
Total			\$271,000	\$284,000



District Facilities Program



SCADA Control Room and Wet Lab Upgrades Project

15 | December 14, 2022



District Facilities Program



MWRF Administration Building

December 2022

16 | December 14, 2022



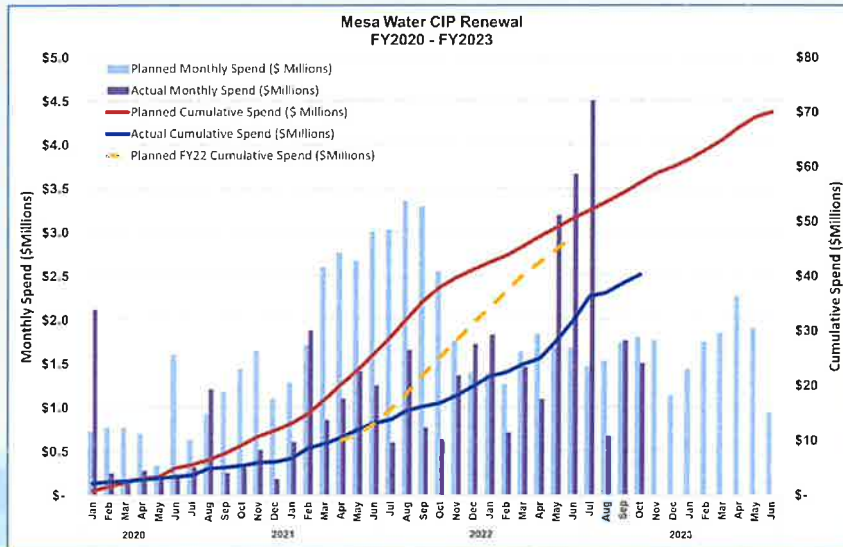
Financial Summary

	Program Cost	Existing Contracts	Actual Spent to Date
Wells	\$21,700,000	\$21,700,000	\$18,364,000
Reservoirs	\$19,500,000	\$2,800,000	\$1,311,000
Distribution	\$8,500,000	\$7,100,000	\$5,515,000
Routine Capital	\$3,500,000	\$3,500,000	\$2,800,000
District Facilities	\$8,200,000	\$8,100,000	\$4,901,000
Annual Programs, Staffing and Other Agency Projects	\$8,600,000	\$8,600,000	\$7,269,000
Total	\$70,000,000	\$51,800,000	\$40,160,000

17 | December 14, 2022



CIPR Program Planned vs. Actual



18 | December 14, 2022



